

TR 2000/3000/9650

Shower trolleys and Mobile Bath Lift System

Hygiene Equipment
Designed for People

Service manual



Registered at Medical Products Agency, Sweden, as a MD Class 1 product, MDD 93/42EEC.

TR reserves the right to make design changes and/or improvements without notice.



Always study this manual carefully before operating the Shower Trolley.

Operating instructions and recommended maintenance procedures are explained in the following pages.

If you have any questions regarding the operation or maintenance of your Shower Trolley and cannot find the answer in this manual, please contact us.

Only qualified staff who are trained and certified and who can understand all operating and safety procedures may operate and service this equipment.

The Trolley is designed for years of trouble free operation, with proper use and maintenance.

Head office

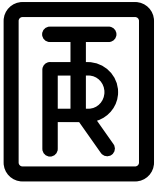
TR Equipment AB, Sweden
Phone: +46 140 38 50 60
info@trequipment.se
www.trequipment.com

Group Subsidiaries

TR Group Inc, US, Phone: +1 (800) 752 6900
TR Equipment Ltd, UK, Phone: +44 (0) 844 335 8386
TRanspoRehaMed GmbH, Germany, Phone: +49 (0) 212 645850-0



TR EQUIPMENT



TR 2000/3000/9650

Shower trolleys and Mobile Bath Lift System

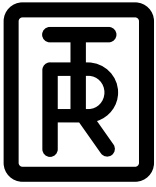
Hygiene Equipment
Designed for People

Table of Content

| | |
|--|----|
| Spare Part Lists | 4 |
| Version produced from 2007 and TR 9650 Mod. 12 | 4 |
| Versions produced before 2007 | 13 |
| Pedal spare kit | 22 |
| TR 3000 and TR9650, Footpedal assembly | 25 |
| Technical Information | 26 |
| TR 3000/9650 (-2006) - Circuit board | 26 |
| TR 3000/9650 (2007-) - Circuit board | 27 |
| TR 3000/9650 (-2006) - Battery charger | 28 |
| TR 3000 (2007 - 2013) / TR 9650 (2007 - 2011) - Battery charger | 29 |
| TR 9650 (2012 -) - Magcode Battery charger | 30 |
| Trouble Shooting instructions | 31 |
| Operating Instructions | 32 |
| Version produced from 2007 | 33 |
| Versions produced before 2007 | 35 |
| Electrical trouble shooting TR 3000/9650 | 37 |
| Service Instructions | 38 |
| TR 2000 (-2006) - Bleeding the hydraulic jack | 38 |
| TR 2000 (2007-) - Bleeding the hydraulic jack | 39 |
| TR 2000 (2007-) - Remove hydraulic pump for filling of oil | 40 |
| TR 2000 (2007-) - Replacing hydraulic pump | 43 |
| TR 2000 (2007-) - Change the plastic cover and sledge | 45 |
| TR 2000 (-2006) - Change the metal cover and sledge | 46 |
| TR 3000 (-2006) - Change the metal cover and sledge | 47 |
| TR 3000 (2007-) - Change the plastic cover and sledge | 48 |
| TR 3000 (2007-) - Instruction how to change the Drivebelt | 49 |
| TR 9650 - Test instruction for auto stop mechanism on the lift | 51 |
| TR 9650 - Assemble the drive belt | 52 |
| TR 3000 / TR 9650 (-200408) - Changing the belt micro switch | 56 |
| TR 3000 / 9650 (-2006) - Adjust the drivebelt tension mechanism | 57 |
| TR 2000 - Instruction how to remove the stretcher part from the base | 58 |
| TR 2000/3000 - Rethreading bed tilt cable | 59 |
| TR 3000 - Instruction how to change the drivebelt (2007-) | 61 |
| TR 9650 - Installing the spacer kit | 63 |
| Adapting the TR 9650 with a hand control | 67 |
| TR 2000/3000 - Replacing the tilt gas springs | 68 |
| TR 9650/TR 3000 - Instruction, retrofit with magnetic charger connection | 70 |
| TR 9650 - Instruction how to replace the cover | 72 |
| TR 2000/3000 - Assembly instructions - Raised chassis set | 75 |



TR EQUIPMENT



TR 2000/3000/9650

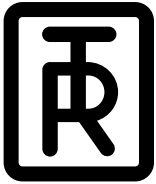
Shower trolleys and Mobile Bath Lift System

*Hygiene Equipment
Designed for People*

| Product | Description | Art no |
|-----------|---|------------|
| TR 2000 | Hydraulic shower trolley, standard, L = 1900 mm | 0522010 |
| TR 2000-S | Hydraulic shower trolley, pediatric, L = 1600 mm | 0522015 |
| TR 2000-L | Hydraulic shower trolley, long, L = 2100 mm | 0522016 |
| TR 3000 | Battery operated shower trolley, standard, L = 1900 mm | 0522000 |
| TR 3000-S | Battery operated shower trolley, pediatric, L = 1600 mm | 0522005 |
| TR 3000-L | Battery operated shower trolley, long, L = 2100 mm | 0522006 |
| TR 9651 | Lift base combi. Battery operated, height adjustable for chair and/or stretcher. Incl battery charger. | 0541020 |
| TR 9651-S | Lift base with narrow legs for chair only. Battery operated, height adjustable. Incl battery charger. | 0541025 |
| TR 9654 | Stretcher with solid seat, pillow and safety belts. | 0541098-04 |
| TR 9655 | Chair with hygiene seat, armsupports and safety belts. | 0541099 |
| TR 9650 | Chair Lift, Battery operated, height adjustable with chair. Including battery charger and safety belts. | 0542000 |
| TR 9650 | Stretcher Lift, Battery operated, height adjustable with stretcher. Including battery charger and safety belts. | 0542010 |
| TR 9650 | Combi Lift, Battery operated, height adjustable with chair. Including battery charger and safety belts. | 0542020 |



TR EQUIPMENT



TR 2000/3000/9650

Shower trolleys and Mobile Bath Lift System

Hygiene Equipment
Designed for People

Spare part list



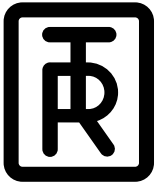
Versions produced from January 2007

Please specify serial no. and article no. when contacting TR Equipment

| | | |
|------------------------------|----------|-------------------|
| TR 2000 | Art. no. | 0522010, -15, -16 |
| TR 3000 | Art. no. | 0522000, -05, -06 |
| TR 9651 | Art. no. | 0541020, -25 |
| TR 9654 | Art. no. | 0541098 |
| TR 9655 | Art. no. | 0541099 |
| TR 9650 Chair Lift | Art. no. | 0542000 |
| TR 9650 Stretcher Lift | Art. no. | 0542010 |
| TR 9650 Combi Lift | Art. no. | 0542020 |
| TR 9650 Stretcher Side parts | Art. no. | 0542030 |



TR EQUIPMENT

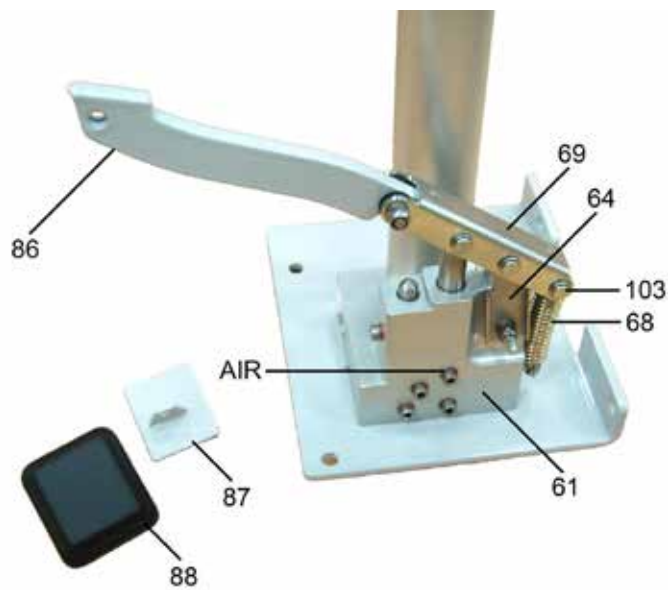
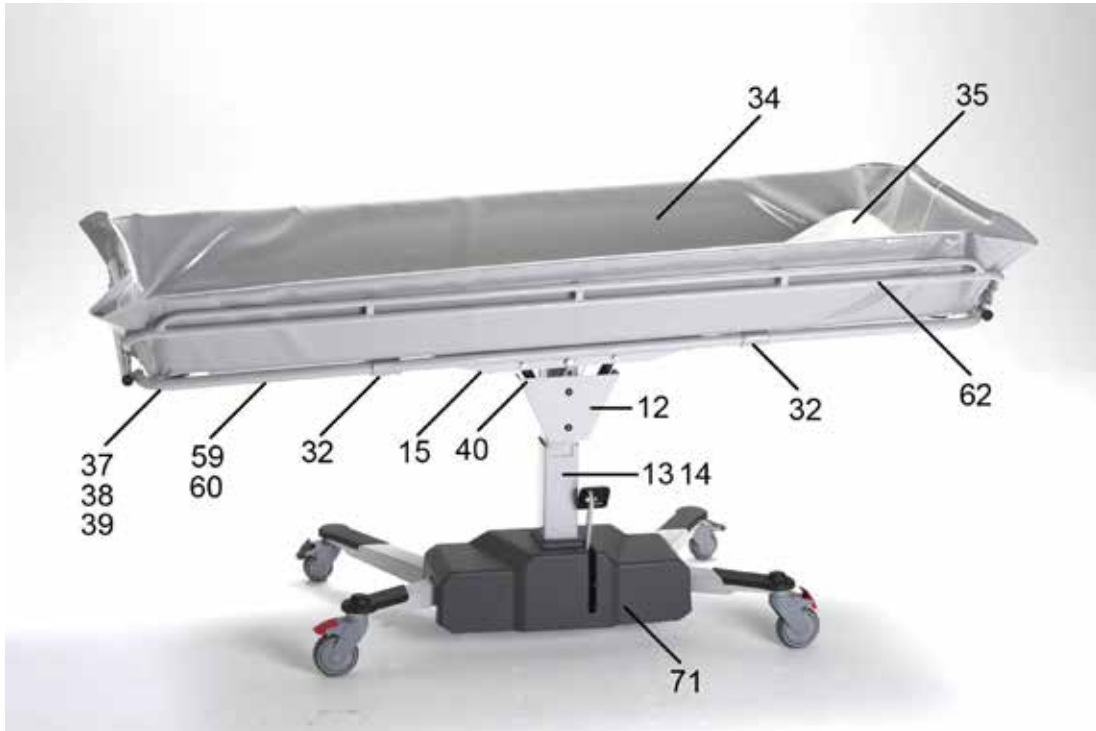


TR 2000/3000/9650

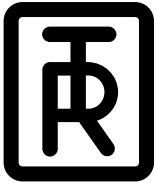
Shower trolleys and Mobile Bath Lift System

Hygiene Equipment
Designed for People

TR 2000 - Hydraulic shower trolley



TR EQUIPMENT

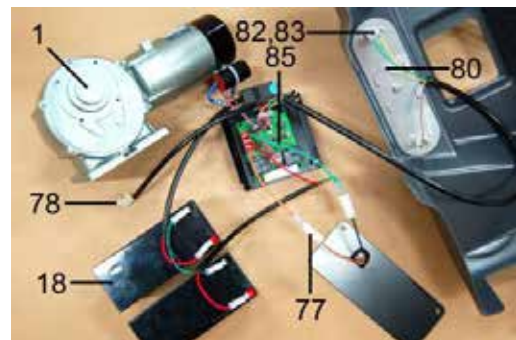
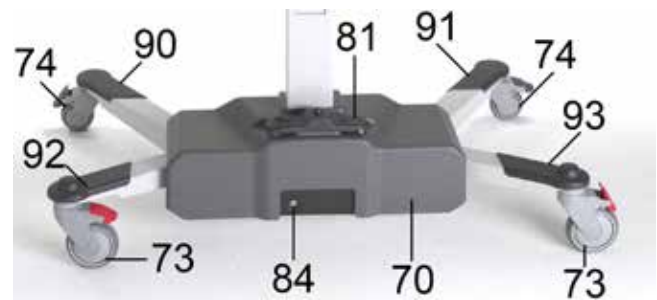
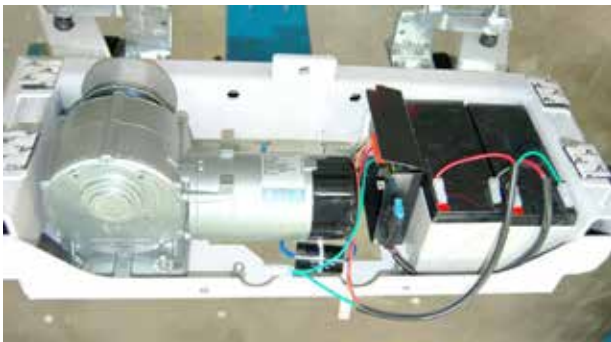


TR 2000/3000/9650

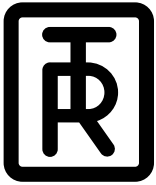
Shower trolleys and Mobile Bath Lift System

Hygiene Equipment
Designed for People

TR 3000 - Battery operated shower trolley



TR EQUIPMENT

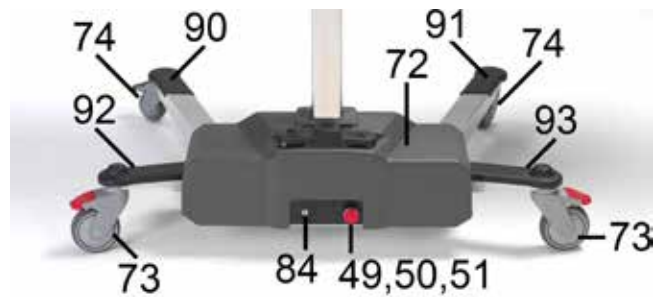
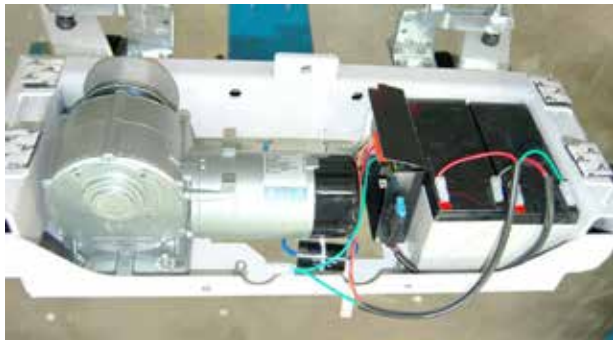


TR 2000/3000/9650

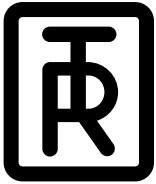
Shower trolleys and Mobile Bath Lift System

Hygiene Equipment
Designed for People

TR 9650 - Mobile patient combilift



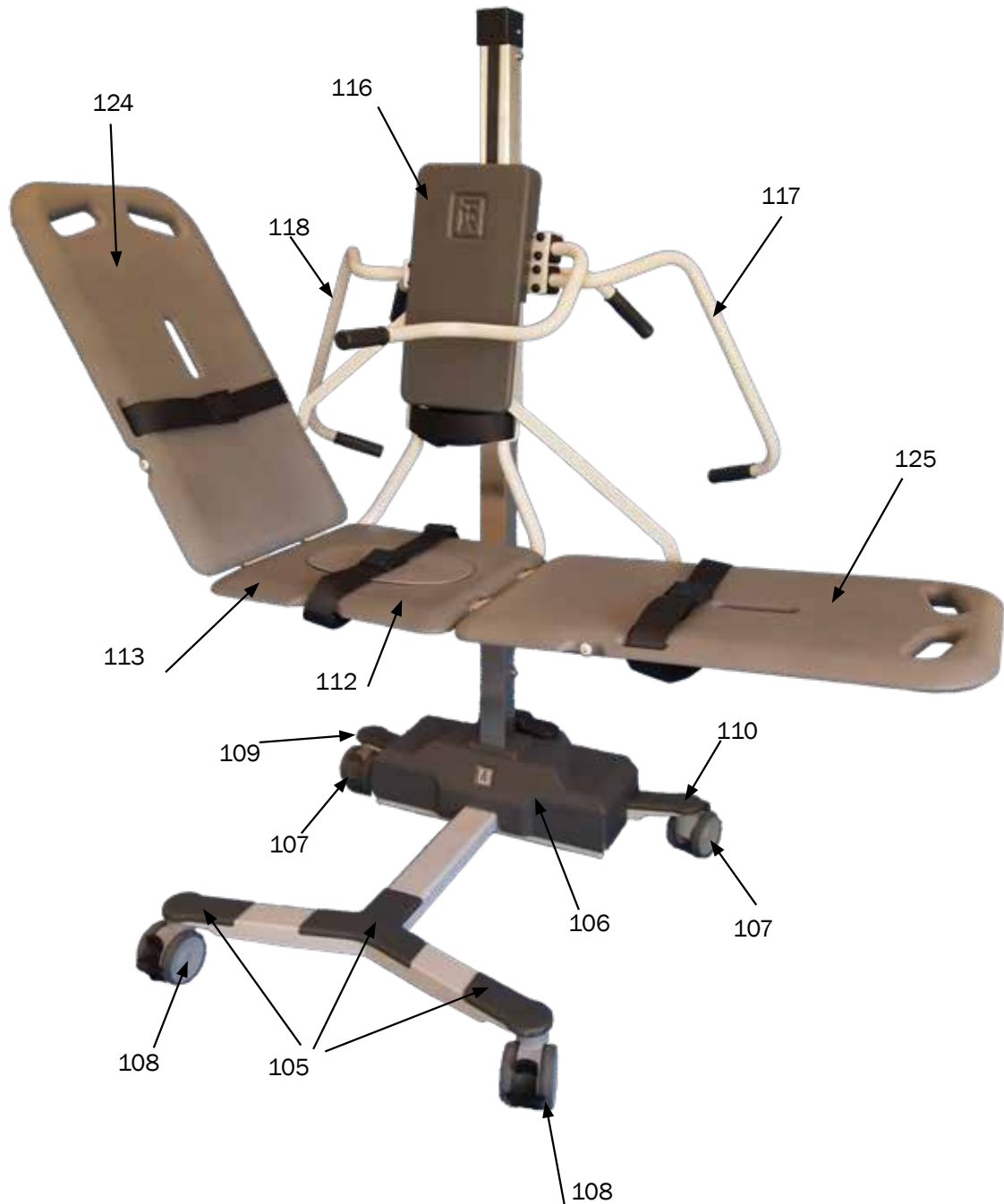
TR EQUIPMENT



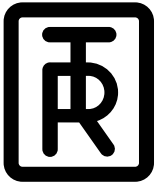
TR 2000/3000/9650

Shower trolleys and Mobile Bath Lift System

Hygiene Equipment
Designed for People



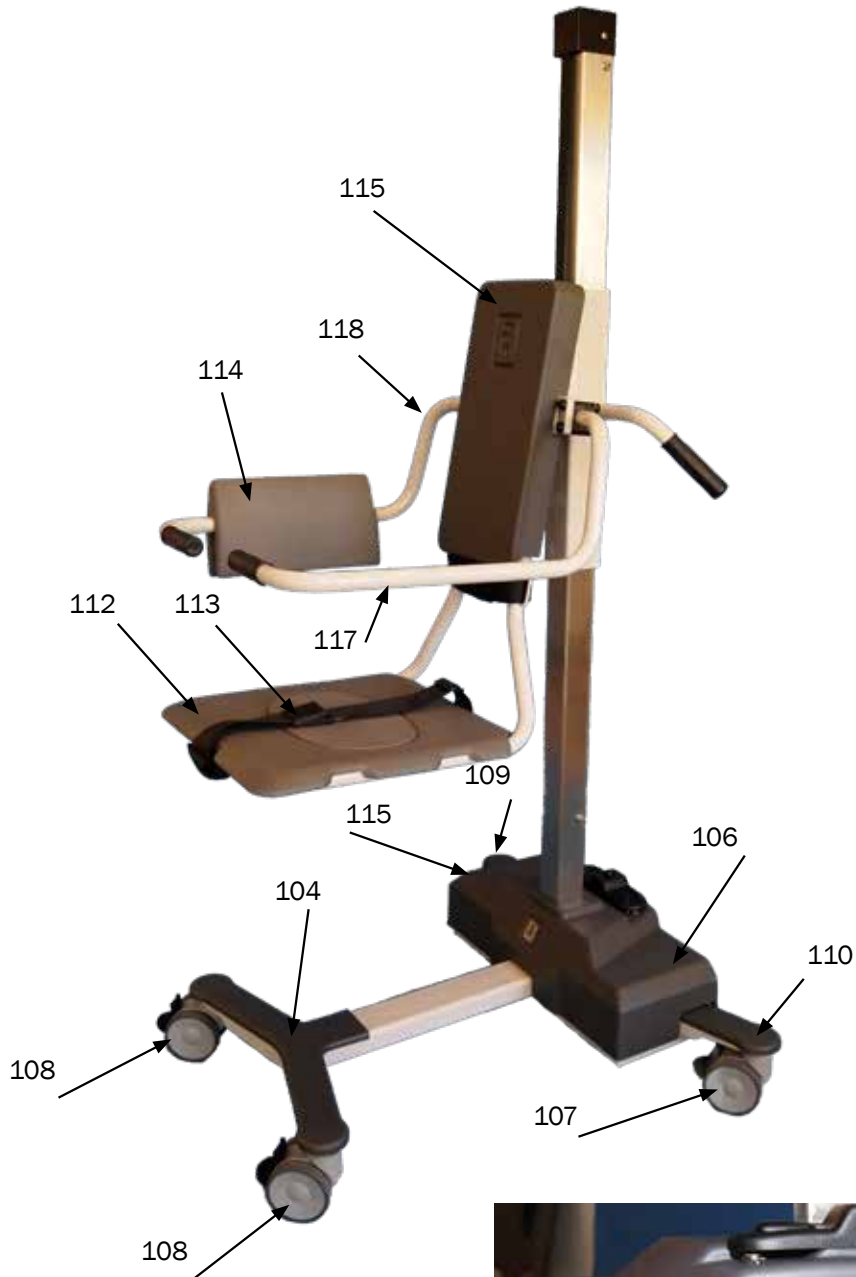
TR EQUIPMENT



TR 2000/3000/9650

Shower trolleys and Mobile Bath Lift System

Hygiene Equipment
Designed for People



TR EQUIPMENT



TR 2000/3000/9650

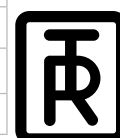
Shower trolleys and Mobile Bath Lift System

Hygiene Equipment
Designed for People

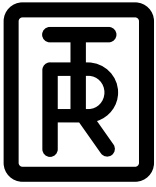
When ordering spare parts please specify model and serial number, see label on the shower trolley/patient lift.

| Mobile patient-combilift | Shower trolley | Art. No. | Description |
|--------------------------|----------------|----------------|-------------------------------|
| 1 | 1 | 2419640 | Motor complete |
| 2 | | 7418124 | Drivebelt 9651 |
| | 2 | 7418618 | Drivebelt 3000 |
| | 12 | 850268 | Gasspring |
| 13 | 13 | 3418126 | Sliding washer |
| 14 | 14 | 7418581 | Shims |
| 15 | | 3419223 | Attachment wheel |
| | 15 | 3418684 | Wire |
| 16 | | 850125 | Rubber hand grip |
| | 16 | 850260 | Spring |
| 18 | 18 | 819030 | Battery |
| 32 | | 850260 | Spring |
| | 32 | 850263 | Knob |
| 33 | | 3418373 | Hinge for armsupport |
| 34 | | 7119253-03 | Protection pad gray |
| | 34 | 7330385 | Mattress 1900 grey |
| | | 7330385-02 | Mattress 1900 blue |
| | | 7330385-03 | Mattress 1900 yellow |
| | | 7330385-04 | Mattress 1600 grey |
| | | 7330385-05 | Mattress 1600 blue |
| | | 7330385-06 | Mattress 1600 yellow |
| | | 7330385-07 | Mattress 2100 gray |
| 35 | | 7119251-03 | Solid seat ABS gray |
| | 35 | 7419488 | Pillow grey |
| | | 7419488-04 | Pillow blue |
| | | 7419488-07 | Pillow yellow |
| 36 | | 7123623-03 | Stretcher pad ABS gray |
| 37 | | 7418323 | Safety belt lock L=1600 chest |
| | 37 | 829392 | Drainage |
| 38 | | 7419488-03 | Pillow grey with belt loops |
| | 38 | 829391 | Plug |
| 39 | | 7419241 | Belt for pillow |
| | 39 | 820818-4224 | Flexi drain hose |
| | | 820818-4224-25 | Flexidrain hose L=2.5 m |
| | | 3418682 | Drainage hose (per meter) |
| | 40 | 850266 | Wire wheel |
| 41 | | 7119252-03 | Hygiene seat ABS gray |
| 42 | | 7418320-02 | Safety belt, legs |
| 43 | | 7418320 | Safety belt lock, chair legs |

Please, order two sets of no.37 drainage and no.38 plug with each shower trolley mattress.



TR EQUIPMENT

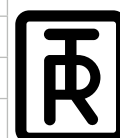


TR 2000/3000/9650

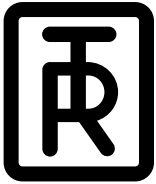
Shower trolleys and Mobile Bath Lift System

Hygiene Equipment
Designed for People

| Mobile patient combilift | Shower trolley | Art. No. | Description |
|--------------------------|----------------|-------------|---------------------------------|
| 44 | | 7219254-03 | Backrest ABS gray on arm |
| | 60 | 7418606 | PVC plate 1900 |
| | 60 | 7418606-02 | PVC plate 1600 |
| | 61 | 7419058 | Hydraulic jack |
| | 62 | 3118491 | Siderail 1900 |
| | | 3118491-02 | Siderail 1600 |
| | 64 | 6419692 | Linkarm |
| | 68 | 850258 | Spring |
| | 69 | 3319018 | Pedal bracket |
| 49 | | 819310 | Emergency button |
| 50 | | 819312 | Switch, emergency |
| 51 | | 850160 | Fender chrome |
| 53 | | 3219643 | Cover for hinge, armsupport |
| | 70 | 7229591 | Gray cover 3000 |
| | 71 | 7228379 | Gray cover 2000 |
| 72 | | 7228378 | Gray cover 9651 |
| 72 | | 7229592 | Gray cover 9651-S |
| 73 | 73 | 850510 | Castor 100 mm brake |
| 74 | 74 | 850514 | Castor 75 mm straight steering |
| | | 0522030 | Castors set for raising |
| | | 850512 | Castor 125 mm brake |
| | | 850516 | Castor 100 mm straight steering |
| 77 | 77 | 7329677 | Wire charging |
| 78 | 78 | 7329676 | Wire set micro switch |
| 80 | 80 | 3330035 | Pedal metal plate |
| 81 | 81 | 7329582 | Pedal plastic |
| 82 | 82 | 819430 | Switch |
| 83 | 83 | 819432 | Rubber (switch) |
| 84 | 84 | 819434 | DC jack |
| 85 | 85 | 819351 | Circuit board |
| | 86 | 3328404 | Pedal arm 2000 |
| | 87 | 3428405 | Pedal plate 2000 |
| | 88 | 7429583 | Pedal plate cover 2000 |
| 90 | 90 | 7429578 | Fender front left |
| 91 | 91 | 7429578-02 | Fender front right |
| 92 | 92 | 7429579 | Fender back left |
| 93 | 93 | 7429579-02 | Fender back right |
| | 103 | 831210-0630 | Pinbolt |
| | | 7418116 | Drivebelt top roller |
| | | 7418113 | Top roller axle |



TR EQUIPMENT



TR 2000/3000/9650

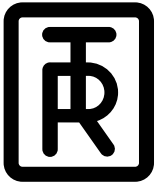
Shower trolleys and Mobile Bath Lift System

Hygiene Equipment
Designed for People

| | | |
|-----|--------------|--|
| | 833160-8016D | Top roller axle screw |
| | 7429678 | Cable DC Jack |
| | 3330036 | Pedalbracket Lift |
| | 3418482 | Column Jacket steering |
| 4 | 3118210 | Armsupport Right |
| 6 | 3118210-02 | Armsupport Left |
| | 0541225 | Battery charger |
| | 819141 | US plug type A |
| | 819140 | Euro plug type C |
| | 819142 | UK plug type G |
| | 819230 | Capacitor |
| | 0529002 | Pedal spare part kit TR 2000 produced after January 2007 |
| | 0529001 | Pedal spare part kit TR 2000 produced before January 2007 |
| | 0541226 | Batterycharger Magcode Mod 12 On TR 3000 from serial no: 1401-21704 |
| 104 | 7331128 | Fender front Chairlift Mod 12 |
| 105 | 7331129 | Fender front Combi/Stretchlift Mod 12 |
| 106 | 7228380 | Gray Cover Lift Mod 12 |
| 107 | 851760 | Castor 100 mm brake Mod 12 |
| 108 | 851761 | Castor 100 mm straight steering Mod 12 |
| | 851762 | Castor 75 mm brake Linea |
| 109 | 7429578 | Fender back left Mod 12 |
| 110 | 7429578-02 | Fender back right Mod 12 |
| 111 | 850161 | Protection emergency stop Mod 12 |
| 112 | 7119252-04 | Seat PUR Gray Mod 12 |
| 113 | 7119252-05 | Plug for seat PUR Gray Mod 12 |
| 114 | 7219254-04 | Backrest PUR Gray Mod 12 |
| 115 | 200103 | Protection pad Gray chair Mod 12 |
| 116 | 200104 | Protection pad Gray combi/stretchers Mod 12 |
| 117 | 3231041 | Armsupport right Mod 12 |
| 118 | 3231041-02 | Armsupport left Mod 12 |
| 121 | 819148 | Power Port 24 V Magcode (mounted in chassi) |
| 122 | 819149 | Power Clip 24 V Magcode (connector mounted on charger) |
| 123 | 819150 | Port Cover Magcode |
| 124 | 0542030-02 | Sidepart PUR grey left side, Mod. 12 |
| 125 | 0542030-03 | Sidepart PUR grey right side, Mod. 12 |



TR EQUIPMENT



TR 2000/3000/9650

Shower trolleys and Mobile Bath Lift System

*Hygiene Equipment
Designed for People*

Spare part list



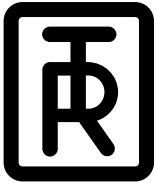
Versions produced before January 2007

Please specify serial no. when ordering spare parts

| | | |
|---------|----------|--------------|
| TR 2000 | Art. no. | 0521005, -06 |
| TR 3000 | Art. no. | 0521001, -02 |
| TR 9651 | Art. no. | 0541005, -06 |
| TR 9671 | Art. no. | 0541007 |



TR EQUIPMENT

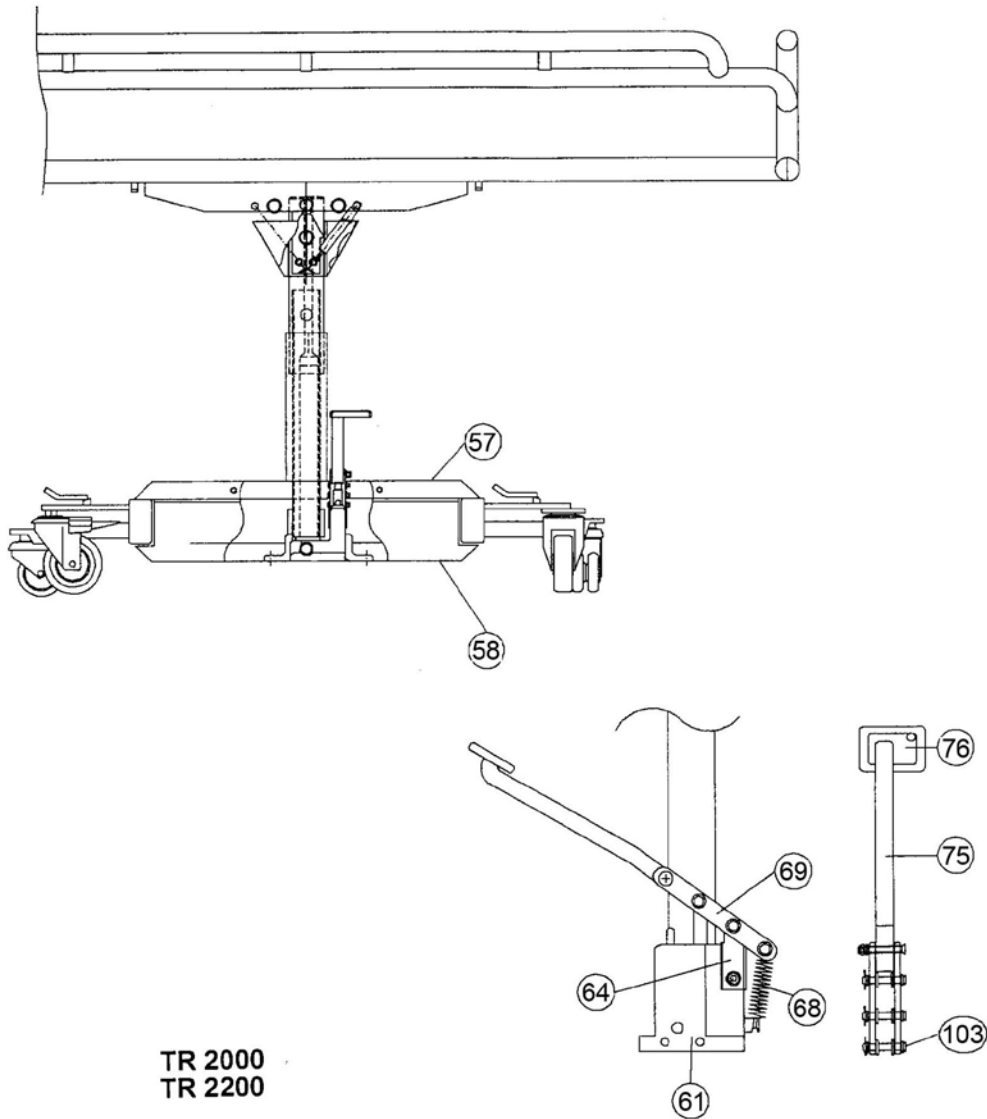


TR 2000/3000/9650

Shower trolleys and Mobile Bath Lift System

Hygiene Equipment
Designed for People

TR 2000 - Hydraulic shower trolley



TR EQUIPMENT

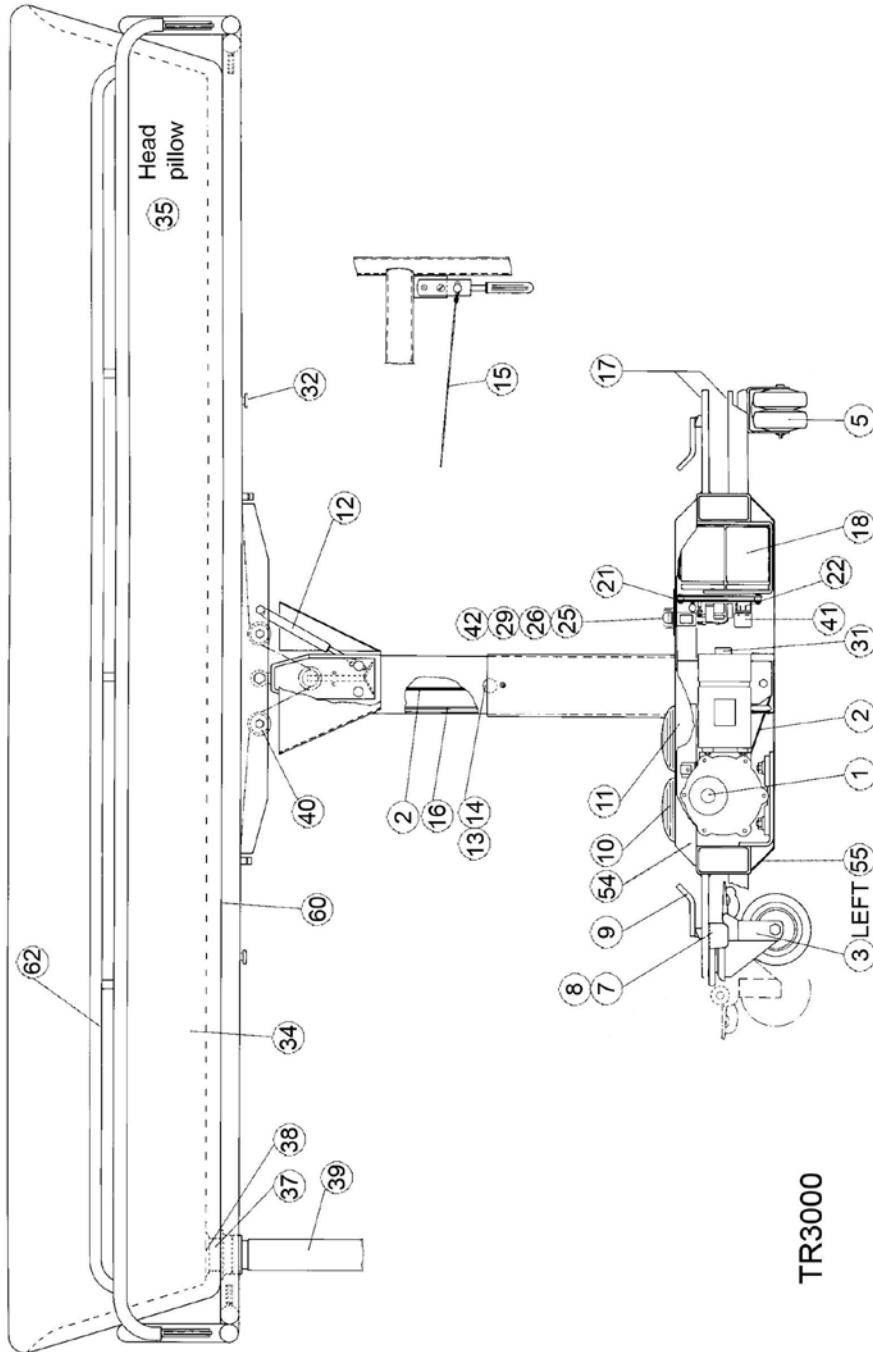


TR 2000/3000/9650

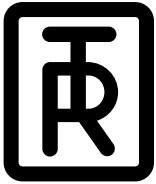
Shower trolleys and Mobile Bath Lift System

Hygiene Equipment
Designed for People

TR 3000 - Battery operated shower trolley



TR EQUIPMENT

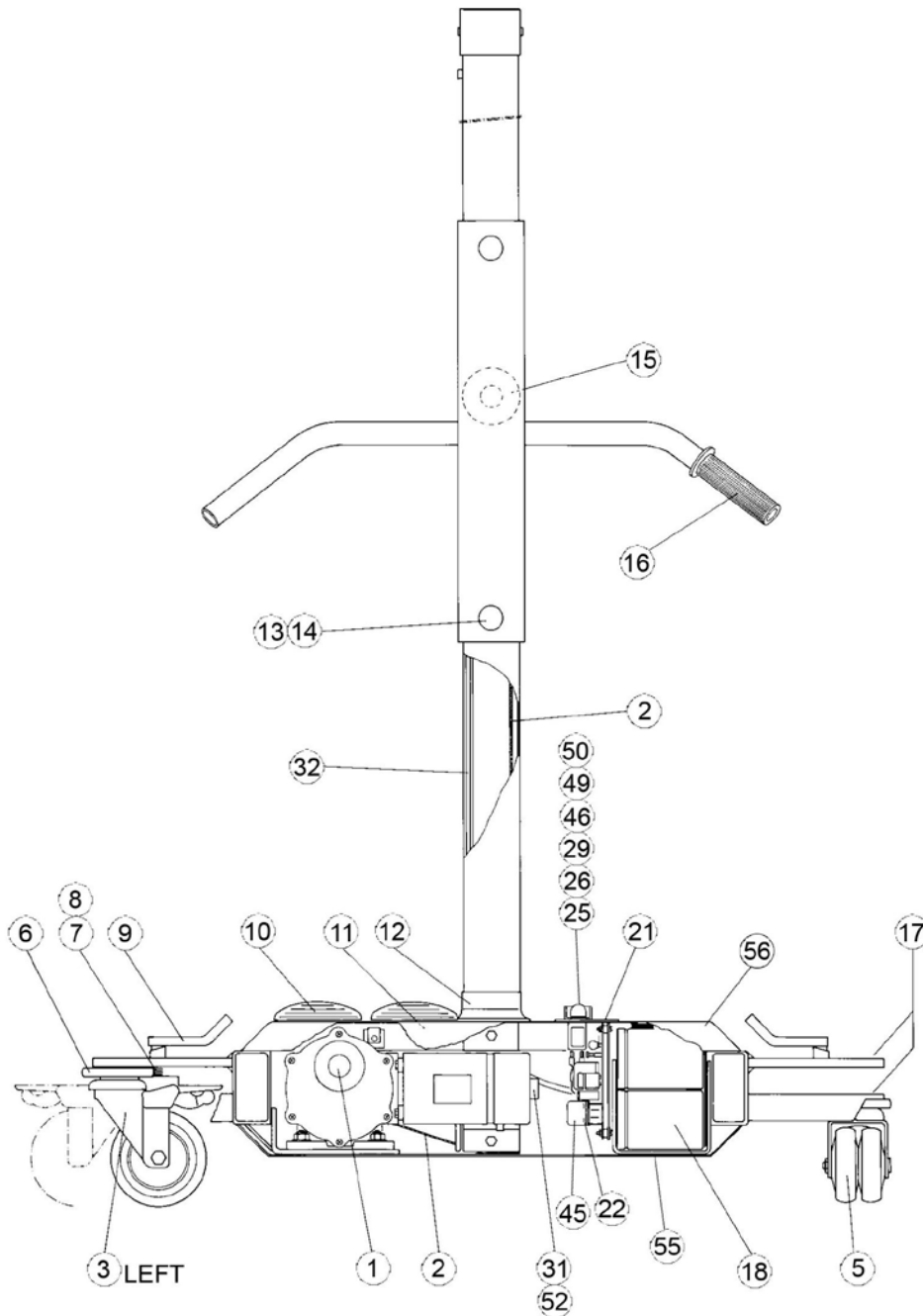


TR 2000/3000/9650

Shower trolleys and Mobile Bath Lift System

Hygiene Equipment
Designed for People

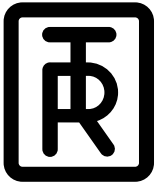
TR 9651



TR 9651



TR EQUIPMENT

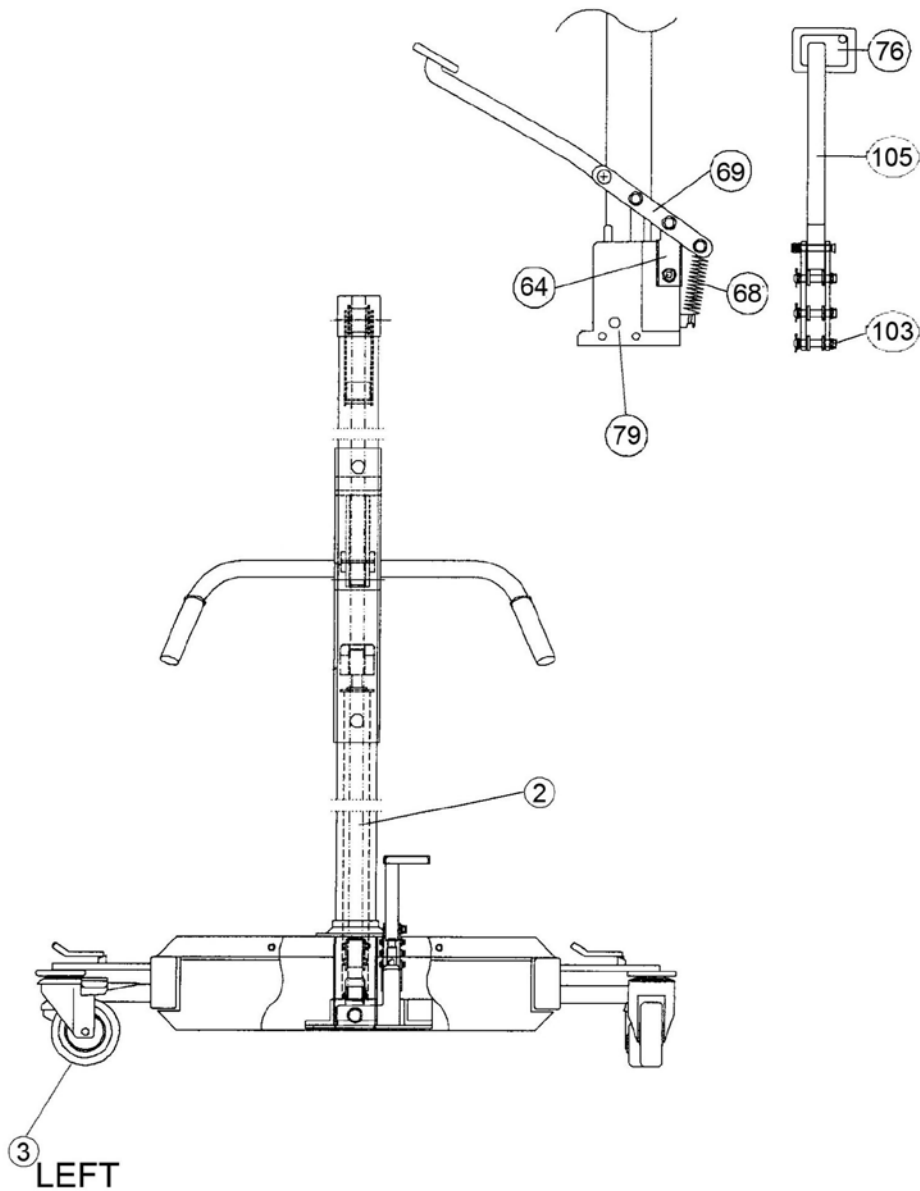


TR 2000/3000/9650

Shower trolleys and Mobile Bath Lift System

Hygiene Equipment
Designed for People

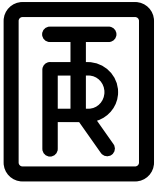
TR 9751



TR 9751



TR EQUIPMENT

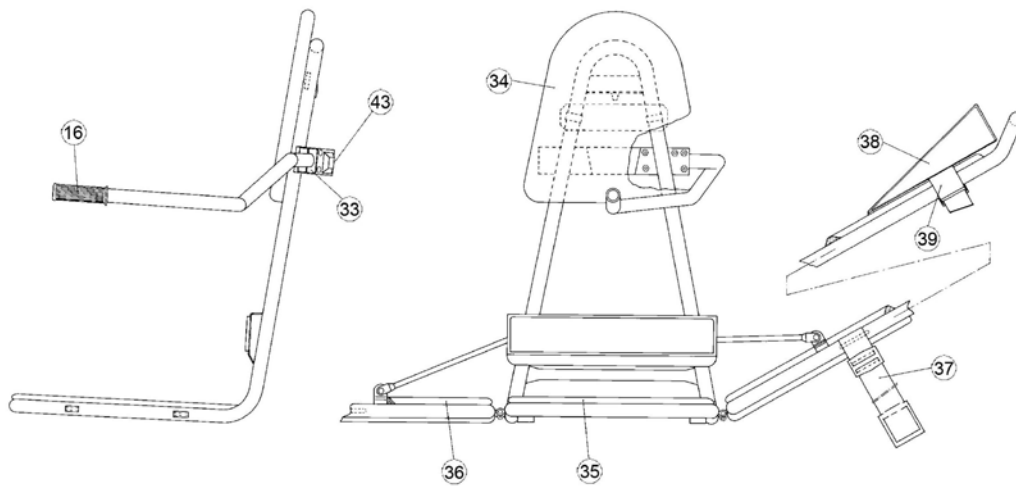


TR 2000/3000/9650

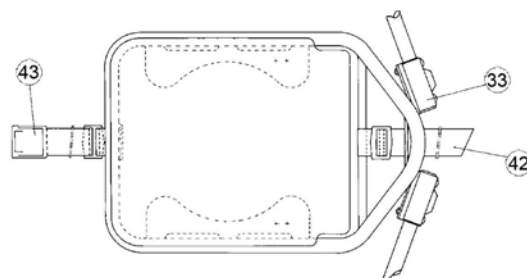
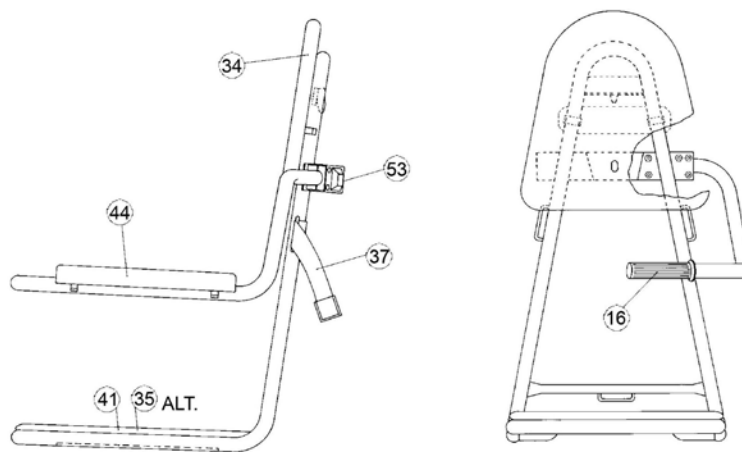
Shower trolleys and Mobile Bath Lift System

Hygiene Equipment
Designed for People

TR 9654 and TR 9655



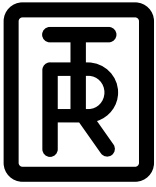
TR 9654



TR 9655



TR EQUIPMENT



TR 2000/3000/9650

Shower trolleys and Mobile Bath Lift System

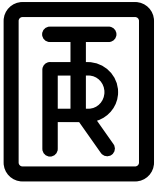
Hygiene Equipment
Designed for People

When ordering spare parts please specify model and serial number, see label on the shower trolley/patient lift.

| Mobile patient combilift | Shower trolley | Art. No. | Description |
|--------------------------|----------------|-------------|-----------------------------|
| 1 | 1 | 2419640 | Motor complete |
| 2 | | 7418124 | Drivebelt TR 9651 |
| 2 | | 7319716 | Drivebelt TR 9751 |
| | 2 | 7418618 | Drivebelt TR 3000 |
| 3 | 3 | 3418751 | Castor with brake, left |
| | | 3418751-02 | Castor with brake, right |
| 5 | 5 | 850135 | Twincastor |
| | | 842012-4012 | Washer (spacer) |
| 6 | | 3418128 | Bumper guard |
| 7 | 7 | 842013-0102 | Spring washer |
| 8 | 8 | 843501-0010 | Seeger ring |
| 9 | 9 | 3418710 | Straight steering lever |
| 10 | 10 | 819024 | Foot control pad |
| 11 | 11 | 819046 | Rubber grommet |
| 12 | | 7418181 | Rubber spats |
| | 12 | 850268 | Gaspring |
| 13 | 13 | 3418126 | Sliding washer |
| 14 | 14 | 7418581 | Shims |
| 15 | | 3419223 | Attachment wheel |
| | 15 | 3418684 | Wire |
| 16 | | 850125 | Rubber hand grip |
| | 16 | 850260 | Spring |
| 17 | | 6321280-03 | Slipguard L=118 mm |
| 17 | | 6321280-02 | Slipguard L=358 mm |
| 17 | 17 | 6321280 | Slipguard L=233 mm |
| | 17 | 6321280-04 | Slipguard L=118 mm Left |
| | 17 | 6321280-05 | Slipgurad L=118 mm Right |
| 18 | 18 | 819030 | Battery |
| 21 | 21 | 0530012 | Labels |
| 22 | 22 | 0530063-02 | Circuit board kit 1993-2004 |
| 22 | 22 | 819350-02 | Circuit board from Oct 04 |
| 26 | 26 | 819316 | Springing cap |
| 29 | 29 | 819355 | Low battery light |



TR EQUIPMENT



TR 2000/3000/9650

Shower trolleys and Mobile Bath Lift System

Hygiene Equipment
Designed for People

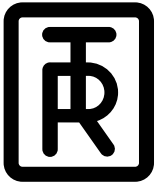
When ordering spare parts please specify model and serial number, see label on the shower trolley/patient lift.

| Mobile patient combilift | Shower trolley | Art. No. | Description |
|--------------------------|----------------|-------------|-----------------------------------|
| 31 | 31 | 819352 | Wire set one switch |
| 31 | 31 | 819352-02 | Wire set two switches |
| 31 | 31 | 6319638 | Bracket for switches |
| | 32 | 850263 | Knob |
| 32 | | 850260 | Spring |
| 33 | | 3418373 | Hinge for armsupport |
| 34 | | 7119253-03 | Protection pad gray |
| | 34 | 7330385 | Mattress 1900 gray |
| | | 7330385-02 | Mattress 1900 blue |
| | | 7330385-03 | Mattress 1900 yellow |
| | | 7330385-04 | Mattress 1600 gray |
| | | 7330385-05 | Mattress 1600 blue |
| | | 7330385-06 | Mattress 1600 yellow |
| | | 7330385-07 | Mattress 2100 gray |
| 35 | | 7119251-03 | Solid seat ABS gray |
| | 35 | 7419488 | Pillow grey |
| | | 7419488-04 | Pillow blue |
| | | 7419488-07 | Pillow yellow |
| 36 | | 7123623-03 | Stretcher pad ABS gray |
| 37 | | 7418323 | Safety belt lock L=1600 stretcher |
| | 37 | 829392 | Drainage |
| 38 | | 7419488-03 | Pillow grey with belt loops |
| | 38 | 829391 | Plug |
| 39 | | 7419241 | Belt for pillow |
| | 39 | 820818-4224 | Flexidrain hose |
| | 40 | 850266 | Wire wheel |
| 41 | | 7119252-03 | Hygiene seat ABS gray |
| 42 | | 7418320-02 | Safety belt chair chest |
| 43 | | 7418320 | Safety belt lock chair legs |
| 44 | | 7219254-03 | Backrest ABS gray on arm |
| 45 | 41 | 819302 | Relay 24 V |
| 46 | 42 | 819318 | Charging socket |
| | | 819099 | Charging plug |
| 49 | | 819310 | Emergency button |

Please, order two sets of no.37 drainage and no.38 plug with each shower trolley mattress.



TR EQUIPMENT



TR 2000/3000/9650

Shower trolleys and Mobile Bath Lift System

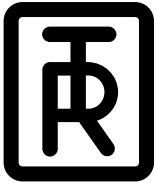
Hygiene Equipment
Designed for People

When ordering spare parts please specify model and serial number, see label on the shower trolley/patient lift.

| Mobile patient combilift | Shower Trolley | Art. No. | Description |
|--------------------------|----------------|-------------|------------------------------|
| 50 | | 819312 | Switch, emergency |
| 53 | | 3219643 | Cover for hinge, armsupport |
| | 54 | 3325521 | Topcover TR 3000 |
| 55 | 55 | 3118065 | Bottom cover TR 3000/TR 9651 |
| 56 | | 3325519 | Topcover TR 9651 |
| | 57 | 3219689 | Topcover TR 2000 |
| | 58 | 3219690 | Bottom cover TR 2000 |
| | 60 | 7418606 | PVC plate 1900 |
| | 60 | 7418606-02 | PVC plate 1600 |
| | 61 | 7419058 | Hydraulic jack |
| | 62 | 3118491 | Siderail 1900 |
| 64 | 64 | 6419692 | Linkarm |
| 68 | 68 | 850258 | Spring |
| 69 | 69 | 3319018 | Pedal bracket |
| | 75 | 3319028-02 | Pedal |
| 76 | 76 | 859034 | Rubber to pedal |
| 79 | | 7320417 | Hydraulic jack |
| 103 | 103 | 831210-0630 | Pinbolt |
| 105 | | 3319028 | Pedal |
| | | 819139 | Secondary Charge Plug |
| | | 850134 | Twincastor with brake 75 mm |
| | | 3319028-02 | Pedal (short |
| | | 0541222 | Battery charger (pl 819099) |
| | | 819141 | US plug type A |
| | | 819140 | Euro plug type C |
| | | 819142 | UK plug type G |



TR EQUIPMENT



TR 2000/3000/9650

Shower trolleys and Mobile Bath Lift System

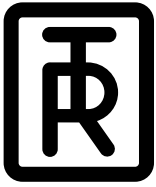
Hygiene Equipment
Designed for People

Pedal spare part kit for TR 2000 produced before Januari 2007

| Pos. | Name | Art. No. | Quantity |
|------|-----------------------|-------------|----------|
| 64 | Linkarm (länkarm) | 6419692 | 2 pcs. |
| 68 | Spring (fjäder) | 850258 | 1 pc. |
| 69 | Pedal bracket (fäste) | 3319018 | 1 pc. |
| 103 | Pinbolt (pinnbult) | 831210-0630 | 3 pcs. |
| | Screw (skruv) | 833300-6030 | 1 pc. |
| | Screw (skruv) | 831050-6035 | 1 pc. |
| | Nut (mutter) | 841031-4006 | 2 pcs. |
| | Pin (saxpinne) | 843810-1220 | 3 pcs. |
| | Washer nylon (bricka) | 850179 | 2 pcs. |
| | Washer ss (bricka) | 842041-0064 | 7 pcs. |
| 75 | Pedal (pedal kort) | 3319028-02 | 1 pc. |
| 76 | Rubber (gummi) | 859034 | 1 pc. |



TR EQUIPMENT



TR 2000/3000/9650

Shower trolleys and Mobile Bath Lift System

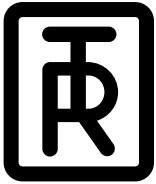
Hygiene Equipment
Designed for People

Pedal spare part kit for TR 2000 produced after January 2007

| Pos. | Name | Art. No. | Quantity |
|------|------------------------|-------------|----------|
| 64 | Linkarm (länkarm) | 6419692 | 2 pcs. |
| 68 | Spring (fjäder) | 850258 | 1 pc. |
| 69 | Pedal bracket (fäste) | 3319018 | 1 pc. |
| 103 | Pinbolt (pinnbult) | 831210-0630 | 3 pcs. |
| | Screw (skruv) | 833300-6030 | 1 pc. |
| | Screw (skruv) | 831050-6035 | 1 pc. |
| | Nut (mutter) | 841031-4006 | 2 pcs. |
| | Pin (saxpinne) | 843810-1220 | 3 pcs. |
| | Washer nylon (bricka) | 850179 | 2 pcs. |
| | Pedal (pedal kort) | 3319028-02 | 1 pc. |
| | Washer ss (bricka) | 842041-0064 | 9 pcs. |
| 86 | Pedal arm | 3328404 | 1 pc. |
| 87 | Pedal plate | 3428405 | 1 pc. |
| 88 | Pedal plate cover | 7429583 | 1 pc. |
| | Spacer washer (bricka) | 850189 | 2 pcs. |
| | Screw (skruv) | 831680-8020 | 1 pc. |
| | Nut (mutter) | 841011-4008 | 1 pc. |
| | Tape 5952 (tejp) | 850227 | 0,1 m |



TR EQUIPMENT



TR 2000/3000/9650

Shower trolleys and Mobile Bath Lift System

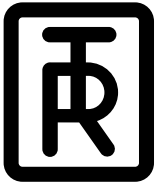
Hygiene Equipment
Designed for People

Pedal spare part kit for TR 9751 (0541010)

| Pos. | Name | Art. No. | Quantity |
|------|-----------------------|-------------|----------|
| 64 | Linkarm (länkarm) | 6419692 | 2 pcs. |
| 68 | Spring (fjäder) | 850258 | 1 pc. |
| 69 | Pedal bracket (fäste) | 3319018 | 1 pc. |
| 103 | Pinbolt (pinnbult) | 831210-0630 | 3 pcs. |
| | Screw (skruv) | 833300-6030 | 1 pc. |
| | Screw (skruv) | 831050-6035 | 1 pc. |
| | Nut (mutter) | 841031-4006 | 2 pcs. |
| | Pin (saxpinne) | 843810-1220 | 3 pcs. |
| | Washer nylon (bricka) | 850179 | 2 pcs. |
| | Washer ss (bricka) | 842041-0064 | 7 pcs. |
| | Washer ss (bricka) | 842041-0064 | 9 pcs. |
| | Pedal arm | 3328404 | 1 pc. |
| 75 | Pedal | 3319028 | 1 pc. |
| 76 | Rubber (gummi) | 859034 | 1 pc. |



TR EQUIPMENT

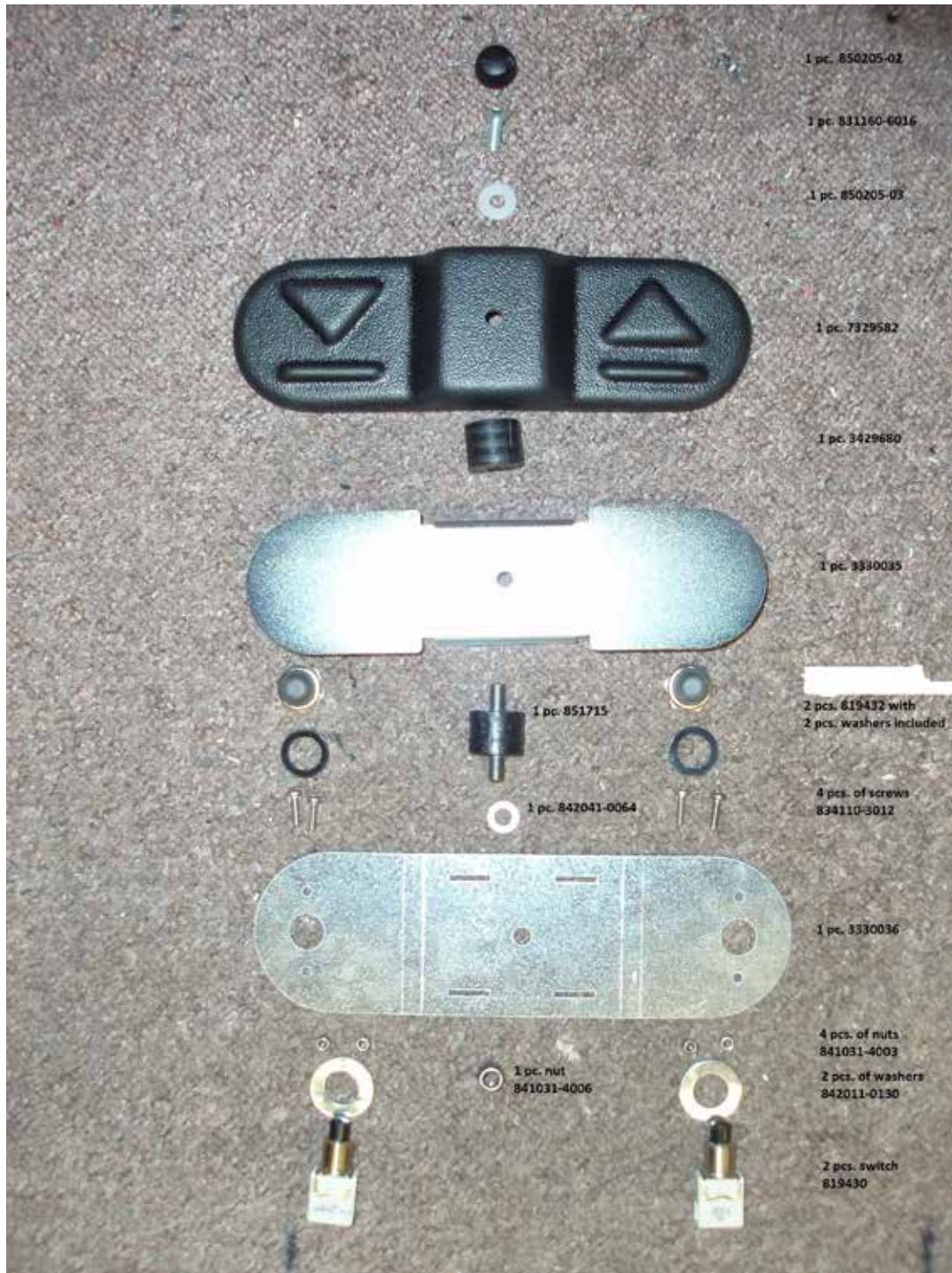


TR 2000/3000/9650

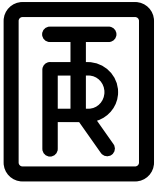
Shower trolleys and Mobile Bath Lift System

Hygiene Equipment
Designed for People

TR 3000 and TR 9650, Footpedal assembly



TR EQUIPMENT



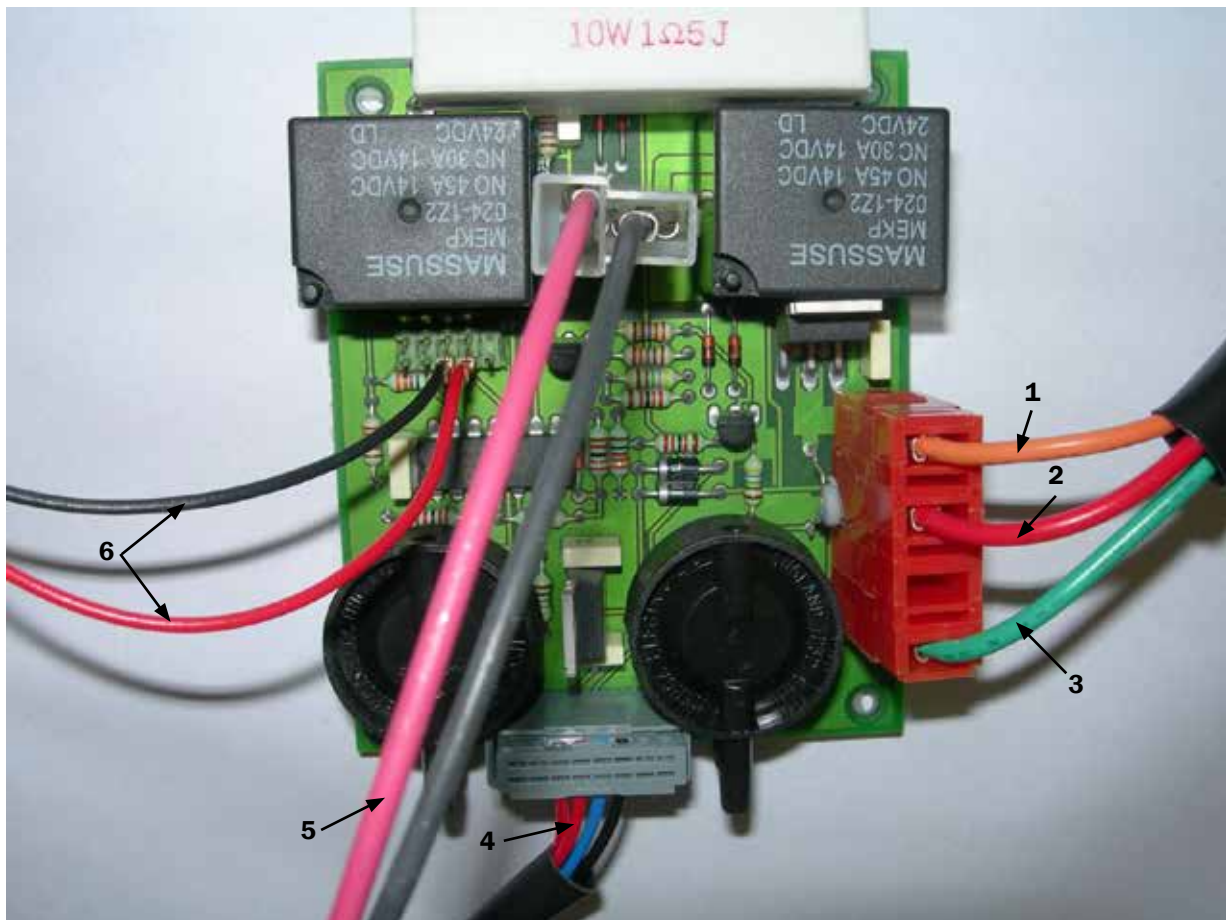
TR 2000/3000/9650

Shower trolleys and Mobile Bath Lift System

Hygiene Equipment
Designed for People

Technical information

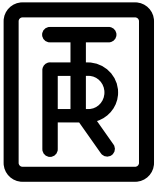
TR 3000 /TR 9650 (-2006) - Circuit Board



| No | Colour / Connection | Connection to |
|----|-------------------------------------|------------------|
| 1 | Orange | Charging inlet + |
| 2 | Red | Battery + |
| 3 | Green | Charging inlet - |
| 4 | Black, Blue, Red, Red (black cover) | Microswitch |
| 5 | Black, Red | Motor |
| 6 | Red, Black | LED |



TR EQUIPMENT

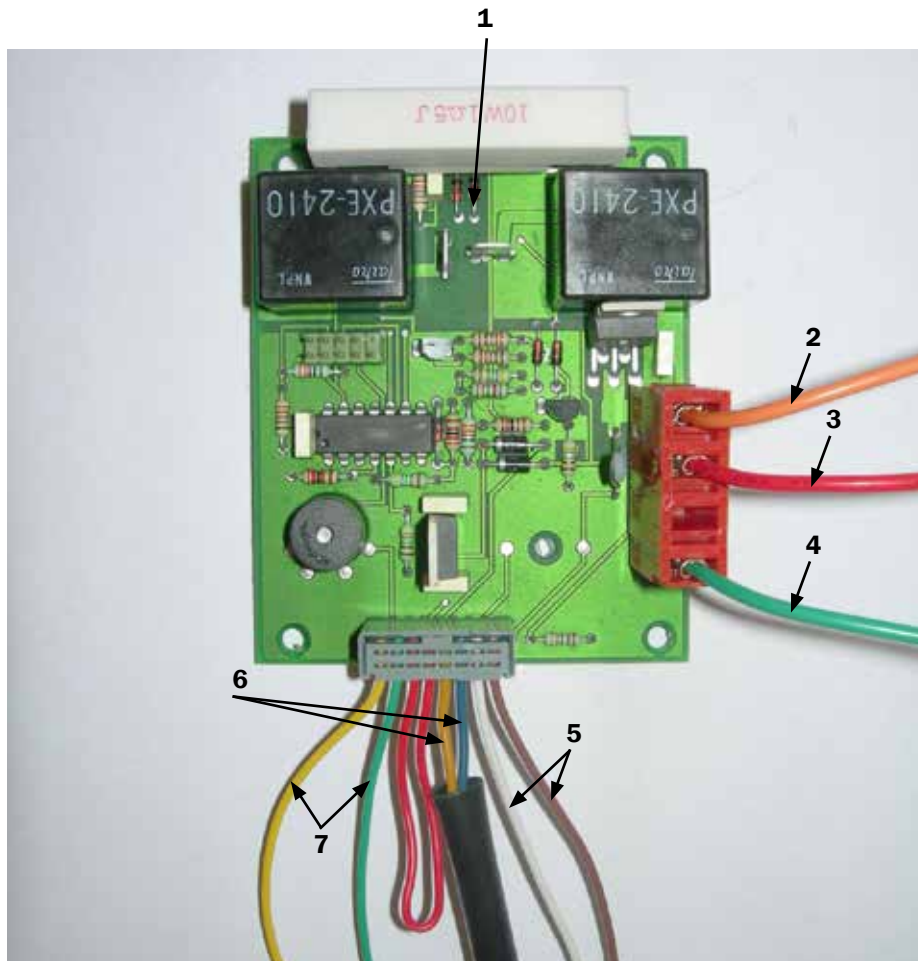


TR 2000/3000/9650

Shower trolleys and Mobile Bath Lift System

Hygiene Equipment
Designed for People

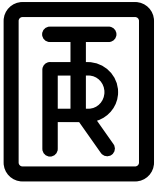
TR 3000 / 9650 (2007-) - Circuit Board



| No | Colour / Connection | Connection to |
|----|-------------------------------|------------------|
| 1 | Flat connection | Motor |
| 2 | Orange | Charging inlet + |
| 3 | Red | Battery + |
| 4 | Green | Charging inlet - |
| 5 | Brown and White | UP Pedal |
| 6 | Blue and Yellow (black cover) | Microswitch |
| 7 | Green and Yellow | DOWN Pedal |



TR EQUIPMENT



TR 2000/3000/9650

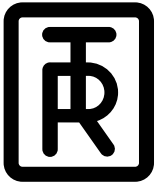
Shower trolleys and Mobile Bath Lift System

Hygiene Equipment
Designed for People

TR 3000/TR 9650 (-2006) - Battery Charger



TR EQUIPMENT



TR 2000/3000/9650

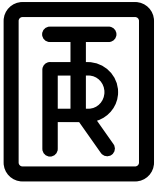
Shower trolleys and Mobile Bath Lift System

Hygiene Equipment
Designed for People

TR 9650 (2007 - 2011) - Battery Charger
TR 3000 (2007 - 2013) - Battery Charger



TR EQUIPMENT



TR 2000/3000/9650

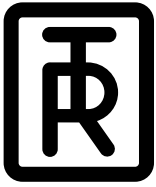
Shower trolleys and Mobile Bath Lift System

Hygiene Equipment
Designed for People

Magcode Charger



TR EQUIPMENT



TR 2000/3000/9650

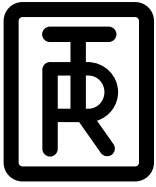
Shower trolleys and Mobile Bath Lift System

*Hygiene Equipment
Designed for People*

Trouble shooting



TR EQUIPMENT



TR 2000/3000/9650

Shower trolleys and Mobile Bath Lift System

*Hygiene Equipment
Designed for People*

Operating instructions (2007-)

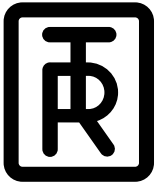
- Charge the lift/trolley when the audible tone sounds while pressing the foot control.
- Use only the 24 V DC battery charger model delivered by TR.
- Connect the battery charger to the lift/trolley before it is connected to the mains.
- Insert the battery charger plug in the lift/trolley. Be sure that the plug is completely in place.
- Plug the battery charger into a GFI (ground fault interrupter) Hospital grade receptacle.
- When the battery charger is properly connected, an indicator on the battery charger will lit orange and change to green when the battery is fully charged. If not, recheck the connection on the mains and the charging plug.
- Maximum charging time is approximately 8 hours. The lift/trolley can never be overcharged.
- When the charging is completed, disconnect the charger from the mains before you disconnect the charger from the lift/trolley.
- When the chair or stretcher hits the top position it stops. Press the “down” foot control to lower.
- The circuit board is protected from overload. When overloaded stop and press the “down” foot control to lower.
- A fuse is connected between the two batteries.
- Emergency Stop on the lift cuts the power from the batteries.

Operating instructions (-2006)

- Charge the lift when the low battery light flashes while pressing a foot pad.
- Use only the 24 V DC battery charger model delivered by TR.
- Connect the battery charger to the lift/trolley before it is connected to the mains.
- Lift cap covering the charger input and insert the battery charger plug. Be sure that the plug is completely in place.
- Plug the battery charger into a GFI (ground fault interrupter) Hospital grade receptacle.
- When the battery charger is properly connected, an indicator on the battery charger will be lit. If not, recheck the connection on the mains and the charging plug.
- This indicator on the battery charger explains the charging cycles and when the batteries are fully charged.
- Normal charging time is approximately 8 hours. The lift/trolley can never be overcharged.
- When the charging is completed, disconnect the charger from the mains before you disconnect the charger from the lift/trolley.
- When the chair or stretcher hits the top position it stops. The low battery light flashes while pressing the “up” foot pad. Press the “down” foot pad to lower.
- The circuit board is protected from overload. If overloaded, the low battery light will flash while pressing the “up” foot pad. Press the “down” foot pad to lower.
- A fuse is connected between the two batteries.
- Emergency Stop on the TR 9651 lift cuts the power from the batteries.



TR EQUIPMENT



TR 2000/3000/9650

Shower trolleys and Mobile Bath Lift System

Hygiene Equipment
Designed for People

Versions produced from January 2007

Please specify serial no. and article no. when contacting TR Equipment

| | | |
|------------------------------|----------|-------------------|
| TR 2000 | Art. no. | 0522010, -15, -16 |
| TR 3000 | Art. no. | 0522000, -05, -06 |
| TR 9651 | Art. no. | 0541020, -25 |
| TR 9650 Chair Lift | Art. no. | 0542000 |
| TR 9650 Stretcher Lift | Art. no. | 0542010 |
| TR 9650 Combi Lift | Art. no. | 0542020 |
| TR 9650 Stretcher Side parts | Art. no. | 0542030 |

If the Lift or Trolley does not work properly please, try the following:

Stainless steel column

- Clean the stainless steel column on the Lift and grease the column on the Trolley.

If the shower trolley starts to jerk and vibrate when lowering, do as follows:

- Hang the mattress alongside and lift the white hinged support shelf.
- Remove the square lid on top of the column.
- Use some silicone grease and spray between the two square stainless steel tubes.
- Raise and lower, up and down a couple of times to smear out the grease.
- Check that both the top and bottom roller move freely.

Charger

Make sure that the wire and charging plug is not damaged and that the charger indicator lights green when connected to the mains.

Fuse

The 15 A fuse is placed between the two batteries. Lift the plastic cover straight up.

It is kept in place on the chassis by Velcro. On the lift, first remove the hexagon screw on the column.

Batteries (18)

Lift the plastic cover straight up. Remove the fuse (between the batteries) and measure the two 12 V gel sealed lead batteries one by one if they have any voltage.

The batteries might also need to be replaced if they are too old or not being charged enough. The batteries cannot be overcharged.

Deposit batteries in accordance with local regulations.

Footcontrol for up and down (80)

Make sure that the black plastic pedal for up and down is working. Remove the plastic pedal and the supporting metal plate. Make sure that the switches (82/83) are working correctly. Lift the plastic cover and make sure that the switch wires are not loose.

Circuit board (85)

If the batteries are charged and the lift/trolley still doesn't move up or down, check if there is a miss contact or wire loose on the circuit board. Use contact spray and spray at the grey connection from the limit switch and at the orange wire connection.



TR EQUIPMENT



TR 2000/3000/9650

Shower trolleys and Mobile Bath Lift System

Hygiene Equipment
Designed for People

Limit switch (78)

An overload protection built in the circuit board stops the motor when the chair/stretcher is at its top position. Press the down pad for lowering.

There is a limit switch placed at the bottom end of the stainless steel column. When a chair/stretcher hits an obstacle while lowering or is at its lowest position, the mechanism and switch feel the lack of tension in the drive belt and stops the motor from unwinding the drive belt. When the drive belt slackens press the up pad to tension it.

Drive belt (2)

Make sure that the drive belt is free from damages all the way. If it has to be changed please, read the separate instruction.

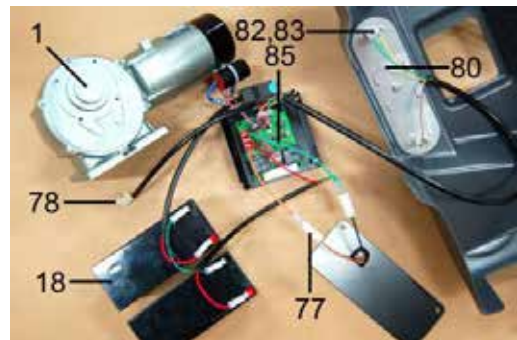
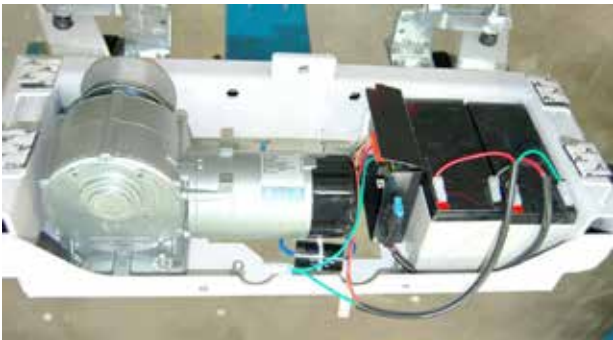
Motor (1)

There is hardly any fault with the motor. In very doubtful cases first check the fuse and the electrically wires. Test the motor function by connecting the motor to the batteries directly and via the capacitor to check if the capacitor is faulty.

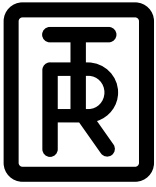
Warning: Be careful when running the motor from winding to the drive belt to the top position as the limit switch will be out of function.

Spareparts

When ordering spare parts please, specify model and serial number, see label on the lift/trolley base. Serial no. starts on 0701-.....



TR EQUIPMENT



TR 2000/3000/9650

Shower trolleys and Mobile Bath Lift System

Hygiene Equipment
Designed for People

Versions produced before January 2007

Please specify serial no. and article no. when contacting TR Equipment

| | | |
|---------|----------|--------------|
| TR 2000 | Art. no. | 0521005, -06 |
| TR 3000 | Art. no. | 0521001, -02 |
| TR 9651 | Art. no. | 0541005, -06 |

If the Lift or Trolley does not work properly please, try the following:

Stainless steel column

- Clean the stainless steel column on the Lift and grease the column on the Trolley.

If the shower trolley starts to jerk and vibrate when lowering, do as follows:

- Hang the mattress alongside and lift the white hinged support shelf.
- Remove the square lid on top of the column.
- Use some silicone grease and spray between the two square stainless steel tubes.
- Raise and lower, up and down a couple of times to smear out the grease.
- Check that both the top and bottom roller move freely.

Charger

Check if the charger is functioning and if the wire to the charging plug has the correct polarity.

Fuse

Check the 15 A fuse, placed between the two batteries. Remove the bottom cover and tilt the lift/trolley to its side for easy access.

Batteries

Remove the bottom cover and tilt the lift/trolley to its side for easy access.

Check if the two 12 V gel sealed lead batteries have any voltage. Remove the fuse and check one by one.

The batteries might also need to be replaced if they are too old or not being charged often or long enough. The batteries cannot be overcharged. Deposit batteries in accordance with local regulations.

Pneumatic pads for up and down

Check if the black pads for up and down are flat or leaking. Loosen and blow some air in the hose if vacuum. board needs to be replaced.

Circuit board

Misconduct on the Circuit board:

If the batteries are charged and the lift/trolley still doesn't move up or down, check if there is a miss contact or wire loose on the circuit board. Use contact spray and spray at the grey connection from the limit switches and at the orange wire connection.

Pneumatic air switches on the Circuit board:

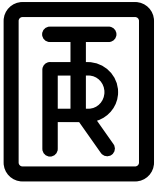
If the lift/trolley still doesn't lower/raise, push the up/down footpads and listen if the pneumatic switches are "clicking". If not, it can be an air leakage in the footpads or in the hoses. Loosen the air hoses and blow into them to level the air pressure. A pneumatic switch can be out of order and the circuit board needs to be replaced.

Relays on the Circuit board:

When pressing the pads the pneumatic switch "clicks" and at the same time a "click" shall be heard from one of the relays. It may be difficult to hear, but listen carefully. If the lift/trolley only moves one way, up or down, it may be a relay that needs to be replaced. Check by interchanging the relays. They are similar. On lifts/trolleys produced later than October 2004 the circuit board must be changed.



TR EQUIPMENT



TR 2000/3000/9650

Shower trolleys and Mobile Bath Lift System

*Hygiene Equipment
Designed for People*

Limit switches

There are two limit switches mounted on the same metal bracket at the bottom end of the column. One to stop the motor at the top position and one for stopping the motor if the chair/stretcher hits an obstacle when lowering or at the lowest position.

Limit switch for stopping the chair/stretcher at the top position.

When you press the up pad and go to the top position an adjustable rod inside the stainless steel column lifts and hits a limit switch which stops the motor from further winding.

Later models without rod, has an overload protection built in the circuit board which stops the motor when the chair/stretcher is at the top position. Press the down pad for lowering.

Limit switch for stopping the chair/stretcher at its lowest position.

The chair/stretcher runs up or down when there is a tension in the drivebelt. When a chair/stretcher hits an obstacle while lowering or is at its lowest position, the mechanism feels the lack of tension in the drivebelt and stops the motor from unwinding. When the drivebelt slackens press the up pad to tension the drivebelt and the chair/stretcher runs upwards.

Motor

There is hardly any fault with the motor. In very doubtful cases first check the fuse and the electrical wires. Test the motor function by connecting the motor to the batteries directly and via the capacitor to check if the capacitor is faulty. **Warning:** Be careful when running the motor from winding to the drive belt to the top position as the limit switch will be out of function.

Drivebelt

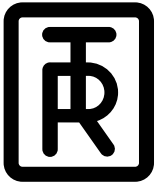
Check the drivebelt from damages all the way. See info later in this document how to change the drivebelt.

Spare parts

When ordering spare parts please, specify model and serial number, see label on the lift/trolley.



TR EQUIPMENT



TR 2000/3000/9650

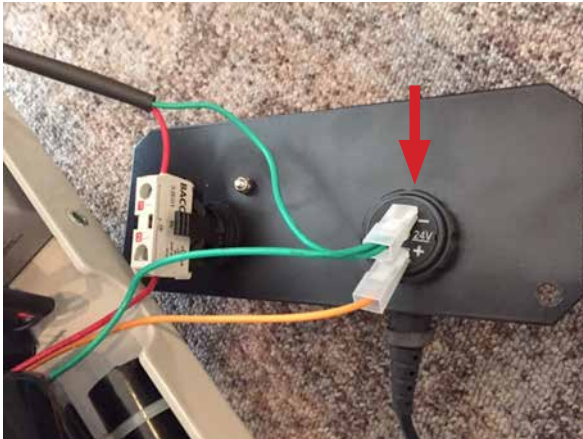
Shower trolleys and Mobile Bath Lift System

Hygiene Equipment
Designed for People

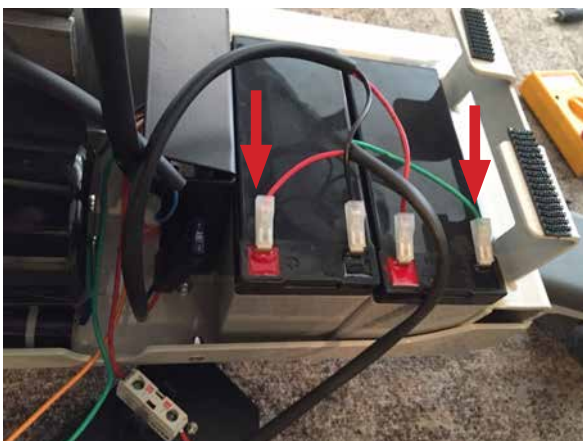
Electrical trouble shooting

1. Check that emergency stop is not activated.
2. Check voltage on both batteries.
Should be min. 12 V+ on each battery (24 V+ in series).
If not: batteries are not charged or need to be replaced.
3. Check that all cables are connected.
4. Check fuse.
5. Check that the charger is working correctly.
When the battery charger is properly connected the LED indicator first lights up in amber. When the trolley/lift is fully charged the LED indicator will turn green.
Plug in charger and measure on the charger plug (24 V+) –
If not: charger is broken.

If charger is ok. Attach charger to the lift and measure on the pins on connector mounted in chassi.
Should be min. 24 V+.
If not: charger connector mounted in chassi is broken.



6. Disconnect the outer connections on the batteries and measure.
Should be (24 V+).
If not: the circuit board and/or cables needs to be replaced.



7. Check that micro switch is activated.
If not: problem is mechanical/related to belt.



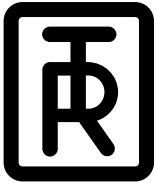
8. When pushing up or down on the foot pedal, listen for a click and measure that voltage is coming from circuit board (24 V+) to the motor. Measure on the below marked white connectors.
If not: problem can be mechanical fault with the foot control or the circuit board and/or cables needs to be replaced.



If all points mentioned above are OK, then it is the motor that is damaged and not working.



TR EQUIPMENT



TR 2000/3000/9650

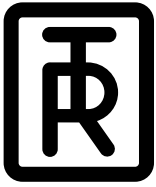
Shower trolleys and Mobile Bath Lift System

*Hygiene Equipment
Designed for People*

Service instructions



TR EQUIPMENT



TR 2000/3000/9650

Shower trolleys and Mobile Bath Lift System

Hygiene Equipment
Designed for People

TR 2000 (-2006) - Bleeding the hydraulic jack

1. Let the trolley stand on its wheels.
2. Remove the bottom metal cover.
3. Lift and support the top metal cover.
4. Loosen screw AIR (do not remove it) on the side of the jack, using an Allen key 4 mm.
5. Slowly press the pedal down. Oil and air bubbles will come out of the screw AIR. When pedal at the bottom, tighten the screw.
6. Slowly let the pedal up, to suck oil from the tank.
7. Repeat procedure until no oil with air bubbles comes out of the AIR screw.
8. Test by pumping the pedal. To lift the stretcher from min to max it takes about 33 strokes. If more strokes are needed there is still air in the pump, repeat airing.

If the stretcher does not reach the top position while pumping, the jack needs more oil.

Removing the jack for filling hydraulic oil:

Lift the mattress and the white shelf to remove the screw (hexagon 8) at the top of the piston.

Tilt the trolley on its side.

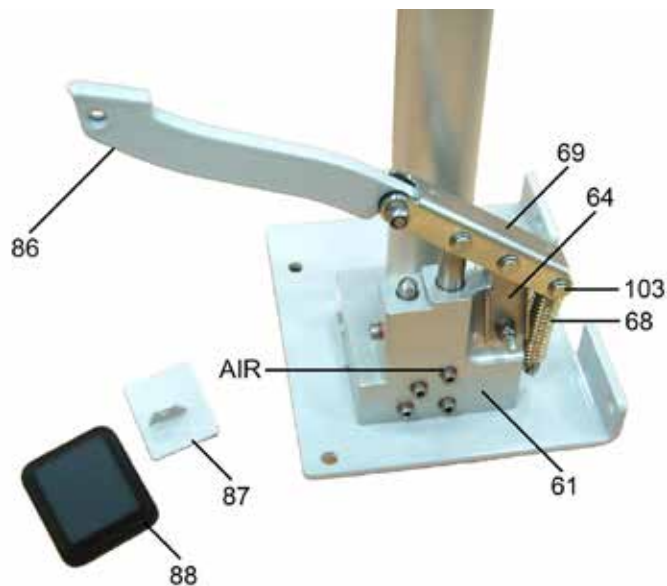
Remove the jack with the four screws in the chassis. Do never keep the jack up side down, try to hold it as vertically not to get air in the pump.

Fill oil in the small hole in the jack's top nut, remove the hexagon screw 2 mm.

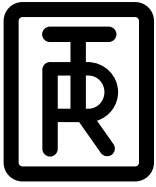
Do not tighten this screw it shall not seal completely as the tank must breath when temperatures changes.

Oil volume 20 cl.

Air the jack after assembling.



TR EQUIPMENT



TR 2000/3000/9650

Shower trolleys and Mobile Bath Lift System

Hygiene Equipment
Designed for People

Bleeding the hydraulic pump on the TR 2000 (2007-)

1. Let the shower trolley stand on its castors in normal position.
2. Remove the pedal plate. Use a Torx T40 for the screw and a 13 mm spanner for the M8 nut.



3. Lift the grey plastic cover straight up, fastened with velcro.
4. Loosen the AIR screw marked with an "A" (do not remove it) on the side of the pump, using an Allen key 4 mm.

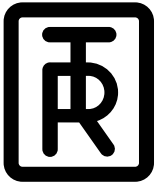


5. Then slowly press the pedal down. Oil and air bubbles will now come out of the Air screw. When the pedal is pushed down to the bottom position, hold it there and then tighten the AIR screw. When the AIR screw is tightened - slowly let the pedal up again, so that the pump sucks oil from the tank.
6. Repeat this procedure until oil with NO air bubbles come out of the AIR screw.
7. Test the hydraulic pump by pumping the pedal. To lift the stretcher from min to max height takes about 33 strokes. If more strokes are needed there is still some air in the pump. If so, repeat the bleeding procedure.

And if the stretcher does not reach the top position while pumping, the pump needs to be filled with more oil.



TR EQUIPMENT



TR 2000/3000/9650

Shower trolleys and Mobile Bath Lift System

Hygiene Equipment
Designed for People

Remove hydraulic pump on TR 2000 (2007-) for filling of oil

- 1 Remove the mattress from the trolley and lift up the white plastic plate on the stretcher. Then remove the screw M8x16 (Torx T40) at the top of the column.



- 2 Remove the pedal plate. Use a Torx T40 for the screw and a 13 mm spanner for the M8 nut.



- 3 Carefully put the shower trolley on its side, so that you can reach the bottom plate under the chassi.

- 4 Remove the 5 pcs. of screws that holds the base plate and the protective tube marked in photo below.



- 5 Now carefully lift out the hydraulic pump from the shower trolley.

- 6 Never hold the hydraulic pump upside down, try to hold it as vertically as possible so that you don't get air into the pump.

- 7 The piston should be in its top position before you start to fill oil into the tank. Remove the hexagon screw 2 mm marked below and fill oil into the small hole. Total oil volume is approx. 20 cl. Use Hydraulic Oil "Shell Tellus 46".

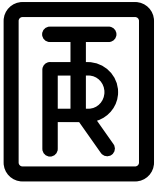


- 8 When oil has been filled into the pump, mount the hexagon screw 2mm again but do not tighten this screw because it must not seal completely as the tank must be able to breathe when the temperature changes.

- 9 Unscrew the 2 pcs. of M6x12 screws a little bit. The hydraulic pump needs to be a little bit loose on the base plate, just to be able to mount the M8x16 screw into the piston at the top of the column.



TR EQUIPMENT



TR 2000/3000/9650

Shower trolleys and Mobile Bath Lift System

Hygiene Equipment
Designed for People

10 Now put the hydraulic pump + base plate into the column and fasten the 5 pcs. of M8x20 screws marked in photo. Use Loctite when you fasten these screws.



12 Now carefully put the shower trolley on its side again and finally tighten the 2 pcs. of M6x12 screws that holds the pump, one at a time. Use Loctite when you fasten these screws.



11 Then turn the shower trolley back up on its castors to normal position and mount the M8x16 screw into the piston of the hydraulic pump at the top of the column. You might need to pump on the pedal to be able to get the piston into the correct position.

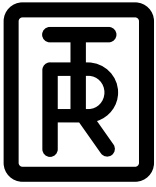


13 You are now ready and can turn the shower trolley back up on its castors to normal position.

14 Always bleed the hydraulic pump after assembly. See instruction "Bleeding the hydraulic pump"



TR EQUIPMENT



TR 2000/3000/9650

Shower trolleys and Mobile Bath Lift System

Hygiene Equipment
Designed for People

Replacing hydraulic pump on TR 2000 (2007-)

1. Remove the mattress from the trolley and lift up the white plastic plate on the stretcher. Then remove the screw M8x16 (Torx T40) at the top of the column.



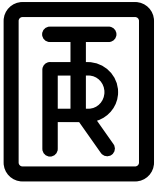
2. Remove the pedal plate. Use a Torx T40 for the screw and a 13 mm spanner for the M8 nut.



3. Carefully put the shower trolley on its side, so that you can reach the bottom plate under the chassi.
4. Remove the 5 pcs. of screws that holds the base plate and the protective tube marked in photo below.



TR EQUIPMENT

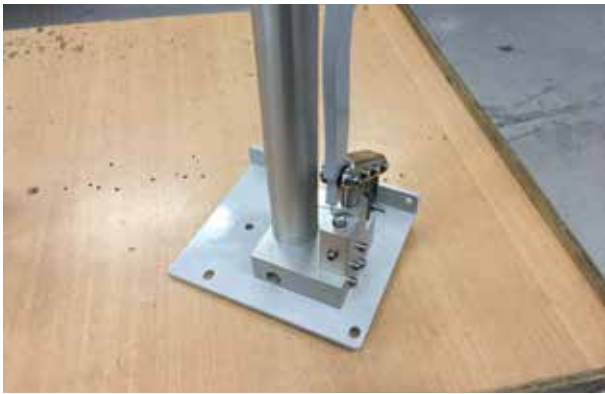


TR 2000/3000/9650

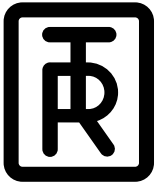
Shower trolleys and Mobile Bath Lift System

Hygiene Equipment
Designed for People

5. Now carefully lift out the hydraulic pump from the shower trolley.
6. Never keep the hydraulic pump upside down, try to hold it vertically as possible so that you don't get air into the pump.
7. Remove the base plate from the hydraulic pump by unscrewing the 2 pcs. of M6x12 screws (Torx T30).
8. Mount the new hydraulic pump on the base plate with the 2 pcs. of M6x12 screws, but do not tighten the screws. The hydraulic pump needs to be a little bit loose on the base plate, just to be able to mount the M8x16 screw into the piston at the top of the column.
Also remember to remove the pedal arm from the old pump and mount it on the new pump.
9. Now put the new hydraulic pump + base plate into the column and fasten the 5 pcs. of M8x20 screws marked in photo. Use Loctite when you fasten these screws.



TR EQUIPMENT



TR 2000/3000/9650

Shower trolleys and Mobile Bath Lift System

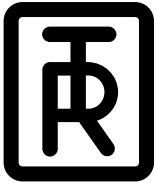
Hygiene Equipment
Designed for People

TR 2000 (2007-) - Change the plastic cover and sledge

1. Lower the stretcher by pressing the hydraulic pedal to the bottom. Remove the pillow, drainage hose and the mattress.
2. Lift the white shelf and loosen one end of the wire for the tilting and pull it out from the sledge. Remove the two screws on top of the gas springs, the two screws holding the stretcher and remove the stretcher. Two persons are needed for this work.
3. Remove the screw on top of the sledge, see picture which holds the hydraulic pistonrod. We recommend you to put some adhesive tape around the sledge to keep the top and bottom sliding washers with shims in place, otherwise they will fall out when you remove the sledge. Before pulling off the sledge completely, test by pulling it up and down a few times by hand to get a feeling of how tight the shimsing is, if you shall change to a new sledge and need new shims.
4. If you need to change the top cover, first remove the pedal plate from the footpedal. Trolleys produced before January 2007 have metal top and bottom covers. Do not tilt a hydraulic trolley on its side.
5. Before the sledge is mounted, clean the stainless steel column and add some very thin oil or grease.
6. If a new sledge shall be mounted, put some adhesive tape around the sledge to cover the holes for the sliding washers. Put shims and the sliding washers from inside the sledge and press the washers to stick to the tape.
7. Push the sledge all the way down on the column and remove all the tape.
8. If a new sledge is mounted, you may have to test some times with different shims to get it as steady as above (3). It is better to shims little tighter than too loose. When testing you maybe need to change the tape.
9. Mount the hexagon screw on top of the sledge. If the piston rod does not match the hole in top of the sledge, centre the piston rod by adjusting the 4 bolts holding the jack. Do not tilt an hydraulic trolley on its side.
10. Mount the stretcher, gas springs and the wire. Test the trolley by raising and lowering it some times after the mattress, pillow and drainage hose are in place.



TR EQUIPMENT



TR 2000/3000/9650

Shower trolleys and Mobile Bath Lift System

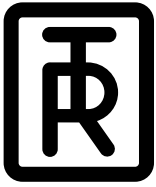
Hygiene Equipment
Designed for People

TR 2000 (-2006) - Change the metal cover and sledge

1. Lower the stretcher by pressing the hydraulic pedal to the bottom. Remove the pillow, drainage hose and the mattress.
2. Lift the white shelf and loosen one end of the wire for the tiling and pull it out from the sledge. Remove the two screws on top of the gas springs, the two screws holding the stretcher and remove the stretcher. Two persons are needed for this work.
3. Remove the screw on top of the sledge, see picture which holds the hydraulic pistonrod. We recommend you to put some adhesive tape around the sledge, see picture to keep the top and bottom sliding washers with shims in place, otherwise they will fall out when you remove the sledge. Before pulling off the sledge completely, test by pulling it up and down a few times by hand to get a feeling of how tight the shims is, if you shall change to a new sledge and need new shims.
4. Now you can remove and change the top cover (if needed). Do not tilt a hydraulic trolley on its side.
5. Before the sledge is mounted, clean the stainless steel column and add some very thin oil or grease. If a new sledge shall be mounted, put some adhesive tape around the sledge to cover the holes for the sliding washers. Put shims and the sliding washers from inside the sledge and press the washers to stick to the tape.
6. Push the sledge all the way down on the column and remove all the tape.
7. If a new sledge is mounted, you may have to test some times with different shims to get it as steady as above (3). It is better to shims little tighter than too loose. When testing you maybe need to change the tape.
8. Mount the hexagon screw on top of the sledge. If the piston rod does not match the hole in top of the sledge, centre the piston rod by adjusting the 4 bolts holding the jack. Do not tilt an hydraulic trolley on its side.
9. Mount the stretcher, gas springs and the wire. Test the trolley by raising and lowering it some times after the mattress, pillow and drainage hose are in place.



TR EQUIPMENT



TR 2000/3000/9650

Shower trolleys and Mobile Bath Lift System

Hygiene Equipment
Designed for People

TR 3000 (-2006) - Change the metal cover and sledge

Removing

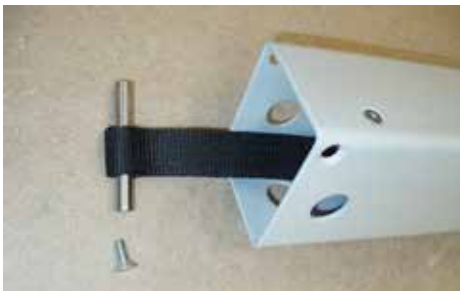
1. Lower the stretcher to its lowest position by pressing the down pad and remove the pillow and mattress. Lift the white shelf and remove the square lid on top of the sledge.
2. Release the "rod grub screw" seen inside the column. Push the rod from underneath to unload the pressure from its spring.

Remove the stretcher in three phases:

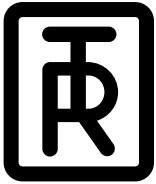
3. Two persons needed for lifting the stretcher about 100 mm/4 inches. A third man has to put adhesive tape around the sledge to keep the top sliding washers and the shims in place (to make it easier later on when assembling).
4. Lift the stretcher some more and put also adhesive tape on the lower plastic washers, see picture.
5. Lift the stretcher and remove the screw holding the drive belt (see photo) on the sledge, see picture. Lift off the stretcher with the sledge completely and place it on the floor beside the chassis.
6. Lay down the chassis on its side and remove the bottom cover and loosen the top cover.
7. Disconnect wires and hoses on the circuit-board and remove the top cover.

Assembling

8. Change to the new top cover, install the circuit board and connect the terminals and hoses.
9. Mount the bottom cover and raise the chassis on wheels.
10. Remount the sledge and stretcher. When pulling the drive belt in the sledge be sure of that the drive belt is not twisted. Put the belt shaft into the belt loop and tighten the screw. Push the sledge further down and remove all the tape
11. Fasten the grub screw (2) on the rod, inside the column. Push the rod from underneath to unload the spring pressure.
12. Mount the square lid on top of the sledge and put the mattress and pillow back on the stretcher. Make a final test by going up and down with the stretcher.



TR EQUIPMENT



TR 2000/3000/9650

Shower trolleys and Mobile Bath Lift System

Hygiene Equipment
Designed for People

TR 3000 (2007-) - Change the plastic cover and sledge

Removing

1. Lower the stretcher to its lowest position by pressing the down pad and remove the pillow and mattress. Lift the white shelf and remove the square lid on top of the column.
2. Release the sledge stop screw, see picture, inside the column.

Remove the stretcher and sledge in three phases:

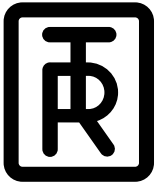
3. Two persons needed for lifting the stretcher about 100 mm/4 inches. A third man has to put adhesive tape around the sledge to keep the top sliding washers and the shims in place (to make it easier later on when assembling).
4. Lift the stretcher some more and put adhesive tape on the lower plastic washers.
5. Lift the stretcher and remove the screw holding the drive belt bolt, see picture, on the sledge. Lift off the stretcher completely and place it on the floor beside the chassis.
6. Lift the plastic cover some and disconnect the wires to the switches for up/down pedal, underside the cover. Lift off the cover and change it (maybe you need to remove and assemble the pedal and switches to the new cover).

Assembling

7. Connect the wires to the switches in the new plastic cover.
8. Mount the drive belt to the sledge (5). Check so the belt is not twisted.
9. Control that the adhesive tape holds the sliding washers and shims in place.
10. Lift the stretcher (still three men) with sledge and push the sledge so far over the column that the lower washers are in place. Push the sledge further down so the top washers are in place all the way down. Remove all adhesive tape.
11. Mount the grub screw (2).
12. Make a final test by going up and down with the stretcher.
13. Mount the square lid on top of the sledge. Put the mattress and pillow back on the stretcher.



TR EQUIPMENT



TR 2000/3000/9650

Shower trolleys and Mobile Bath Lift System

Hygiene Equipment
Designed for People

TR 3000 Products produced later than 2007 Instruction how to change the Drivebelt

Removing

1. Lower the stretcher to its lowest position by pressing the down button. Remove the pillow and mattress and fold up the white plastic plate. Remove the square lid on top of the sledge.
2. Release and remove the stop screw, inside the column, see picture.



3. Now remove the stretcher and sledge in three phases:



- a. Two persons needs to lift the stretcher about 100 mm (4 inches) for a third person to put tape around the sledge to keep the top sliding washers and the shims in place, see picture. This makes it easier when assembling the trolley later on.
- b. Then lift the stretcher some more and remove the screw and stainless steel pin holding the drivebelt on the sledge, see picture.
Then tape the lower plastic washers.
- c. Lift off the stretcher + sledge completely and place it on the floor. Do this carefully so that the sliding washers don't fall out.

4. Lift the plastic cover a little bit (it's fastened by velcro) and disconnect the wires to the switches for up/down pedal. Notice where the wires were connected, since you need to connect them again later.
Lift off the plastic cover completely.
5. Lay the trolley on its side and remove the bottom steel cover on the chassi.



6. Notice and remember how the drivebelt runs. Remove the old drivebelt from the motor.



TR EQUIPMENT



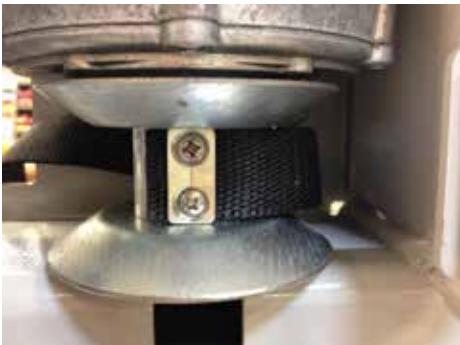
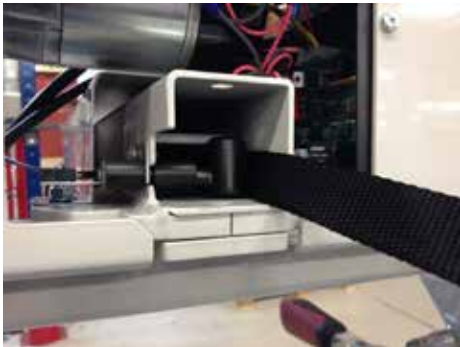
TR 2000/3000/9650

Shower trolleys and Mobile Bath Lift System

Hygiene Equipment
Designed for People

Assembling:

1. Push in the new drivebelt from the bottom of the column. Press on the belt slacking mechanism to let the drivebelt pass all the way to the top of the column. Mount the drivebelt on the motor and make sure the drivebelt is not twisted. Remount the bottom steel cover on the chassi.



2. Connect the wires to the switches in the plastic cover and mount the plastic cover on the chassi again. Raise the trolley on its wheels.
3. Now two persons lift up the stretcher + sledge over the column. The third person mounts the drivebelt on the screw and stainless steel pin to the sledge (see photo under pos. 3b. above)
Make sure the belt is not twisted!

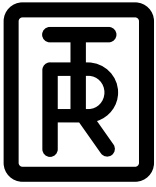
4. Very carefully push the sledge onto the column so that the sliding washers and shims don't fall out. Remove all the tape while slowly lowering the sledge on the column. Then push the sledge all the way down on the column.
5. Mount the stop screw inside the column again. Be careful not to drop it.



6. Mount the square lid on top of the sledge. Fold down the white plastic shelf and put the mattress and pillow back.
7. Make a final test. First by pressing the up button to reach the stretcher top position and then the down button.



TR EQUIPMENT



TR 2000/3000/9650

Shower trolleys and Mobile Bath Lift System

*Hygiene Equipment
Designed for People*

TR 9650 - Test instruction for auto stop mechanism on the lift

The auto stop mechanism is of great importance and will lock the chair/stretchers to the column if the drivebelt brakes.

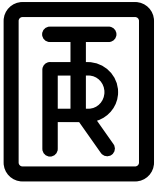
When the chair/stretchers hit an obstacle when lowering, the micro switch feels the lack of tension in the drivebelt and stops the motor from further unwinding. At the same time the auto stop mechanism locks the chair/stretchers to the stainless steel column.

To release the auto stop, press the up pad and the chair/stretchers go upwards.

Test the autostop function. Position the chair/stretchers at a middle high on the column. Lift the chair/stretchers about 30 cm with both your hands and let it go. The autostop shall stop and lock the falling chair/stretchers within 10-20 cm.



TR EQUIPMENT



TR 2000/3000/9650

Shower trolleys and Mobile Bath Lift System

*Hygiene Equipment
Designed for People*

TR 9650 - Assemble the drive belt (for pictures see following pages)

1. Remove the chair or the stretcher and lean the lift to the side while changing the drive belt. Dismount the bottom cover.
2. Make sure you know the way the old drive belt were placed in the lift, before you follow the instructions below.
3. Fasten the new drive belt to the old one. This makes it easier when pulling the new drive belt through the column. Follow the instructions below and the drawings on the following pages.
4. The drive belt shall not be twisted more than 90 degrees inside the column.
5. Release the belt slacken mechanism by compressing it.
6. See drawing how to mount the drive belt to the motor shaft.
7. Mount the drive belt to the autostop mechanism.
First, loop the drive belt into the lift arm and pull, see no. 2.
Mount the drive belt to the pin with the springs and rollers no 1.
Mount the rollers in the correct way, no. 1 on drawing 422940.
8. When mounting the autostop mechanism to the lift arm, pull the drive belt loop no. 2 at the same time as you pull and lower the mechanism to the lift arm. This to release the force from the springs and rollers which makes it easier too mount the mechanism to the lift arm.
9. When the autostop mechanism is in place, clamp the free drive belt loop no. 3 to lift arm F.
10. Ensure that the drive belt loop is correct before mounting the screw no. 4.
11. Loosen clamp no. 3. Pull the drive belt no.2 and control that the autostop mechanism is functioning.
12. Pull the drive belt no.5 by hand or by pressing the "up" pad.



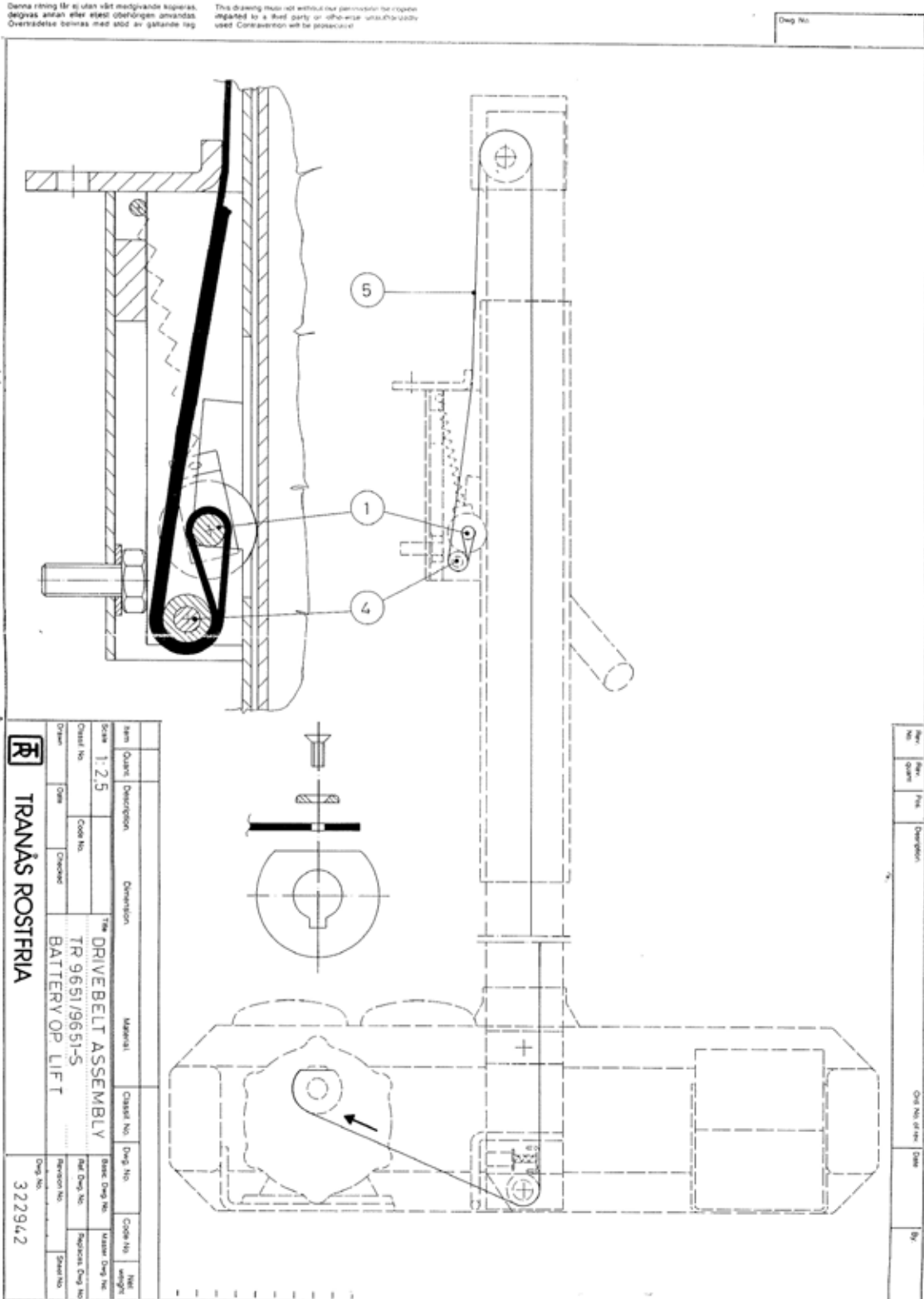
TR EQUIPMENT



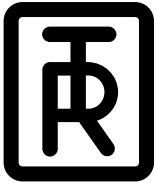
TR 2000/3000/9650

Shower trolleys and Mobile Bath Lift System

Hygiene Equipment
Designed for People



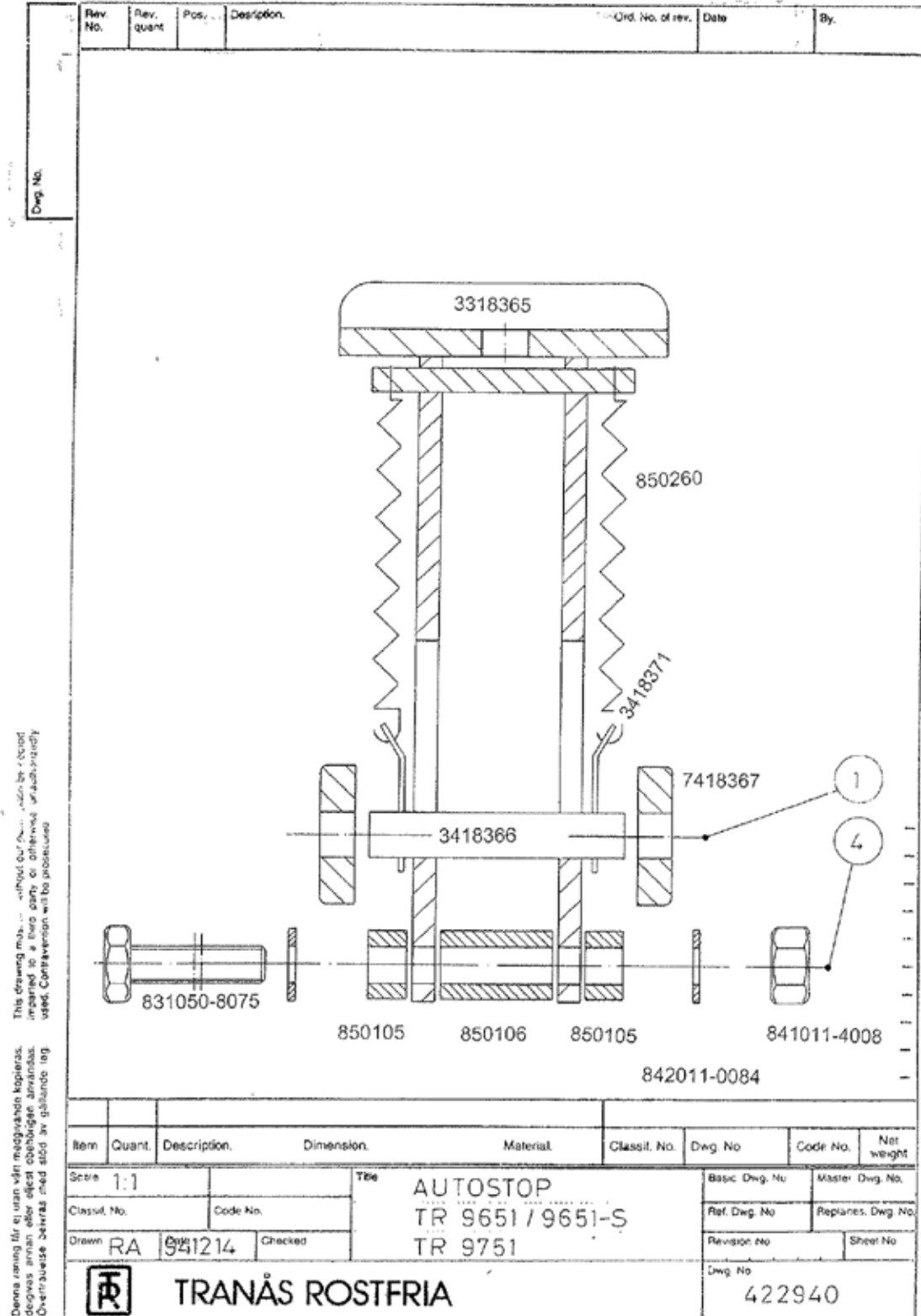
TR EQUIPMENT



TR 2000/3000/9650

Shower trolleys and Mobile Bath Lift System

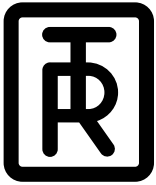
Hygiene Equipment
Designed for People



Denna ritning är en utgåva av en tidigare ritning. Förändringar i ritningen är tillåtna utan vidare avisering. Överträskens tekniska ritningskontroll har godkänt ritningen.



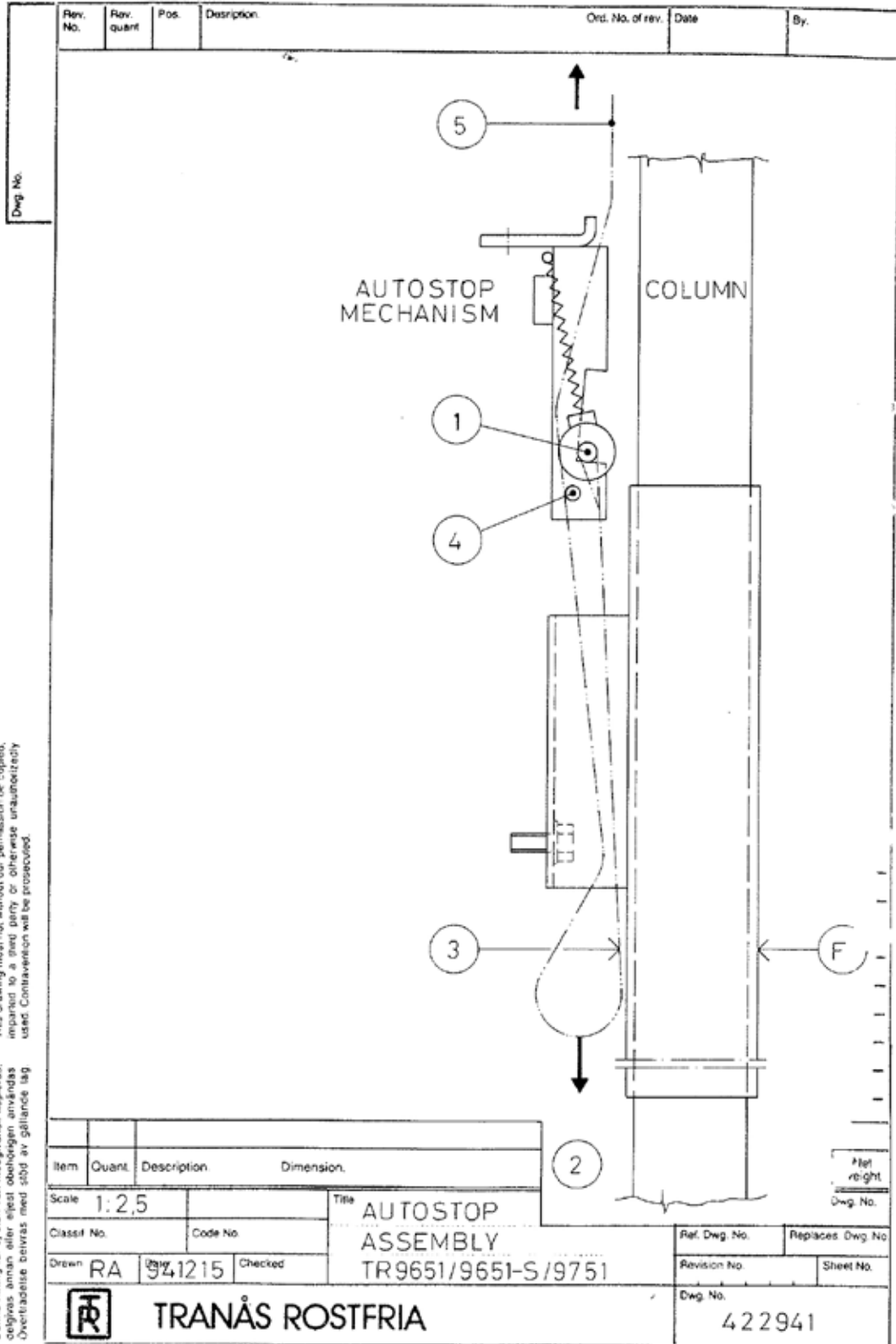
TR EQUIPMENT



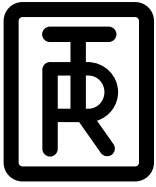
TR 2000/3000/9650

Shower trolleys and Mobile Bath Lift System

Hygiene Equipment
Designed for People



TR EQUIPMENT



TR 2000/3000/9650

Shower trolleys and Mobile Bath Lift System

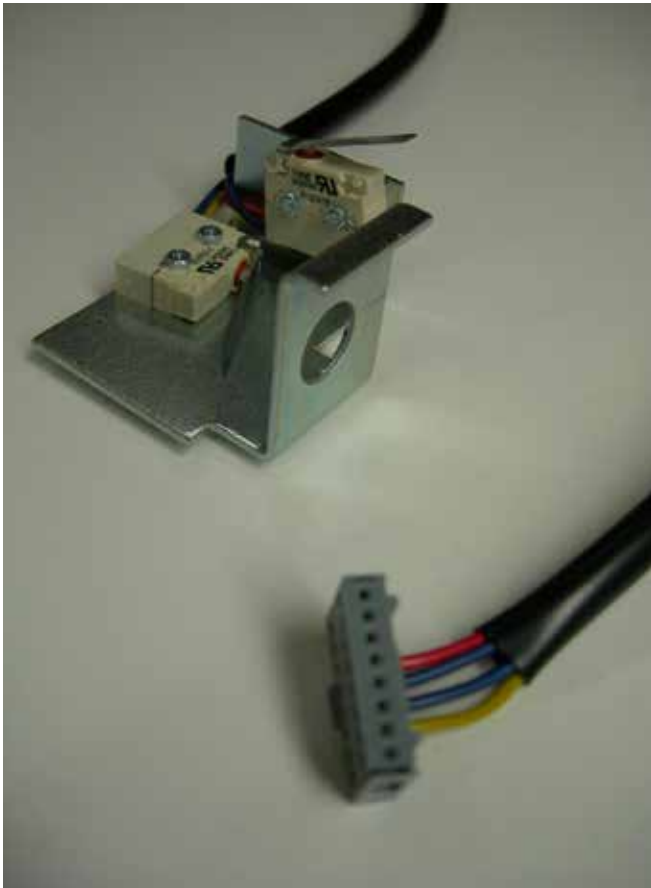
Hygiene Equipment
Designed for People

TR 3000/TR 9650 (-200408) - Changing the belt micro switch

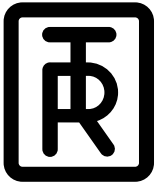
The product had two micro switches one for the belt slacking mechanism and one to stop the motor at the top.

There is a possibility to change the belt slacken switch by following the instruction below.

1. Lay down the trolley on its side and remove the bottom cover.
2. Remove the fuse.
3. Remove the gray wire socket on the circuit board, coming from the switches.
4. Cut the four wires close to the gray socket.
5. Remove the black hose protecting the wires.
6. Remove the faulty belt slacking micro switch from its bracket.
7. Mount the new belt slacken switch (with its new wires and hose) on the bracket.
8. Put also the two existing wires from the "top switch" in the black hose.
9. Cut the red wire loop on the new gray socket and connect them to the "top switch" wires.
10. Assemble the bottom cover and test.



TR EQUIPMENT



TR 2000/3000/9650

Shower trolleys and Mobile Bath Lift System

Hygiene Equipment
Designed for People

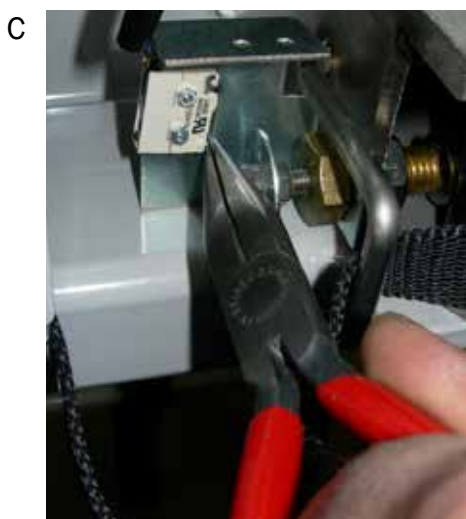
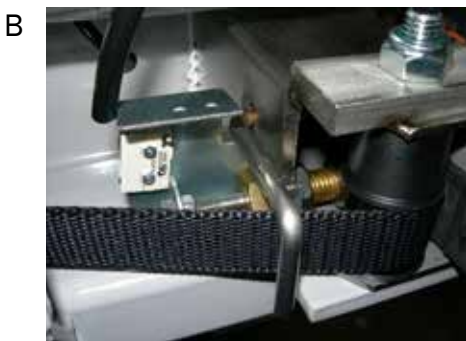
TR 3000/TR 9650 - Adjust the drivebelt tension mechanism

Grease the mechanism some.

Push a 12.5 mm (1/2") square bar into the stainless steel pipe to simulate a tensioned drivebelt, pic A.

The washer in the mechanism shall activate the limit switch pic B, without hurting the switch house or its bracket.

If an empty chair does not lower properly when pressing the down pad, carefully bend the metal wing on the limit switch pic C as the switch shall still be activated in pic D to lower the light weight chair. If necessary, adjust the washer by removing the bar and loosening the 10 mm nuts pic E. The washer shall leave the limit switch completely when the drivebelt slacken pic F. The lift/trolley shall stand up for the final testing.



TR EQUIPMENT



TR 2000/3000/9650

Shower trolleys and Mobile Bath Lift System

Hygiene Equipment
Designed for People

TR 2000, Instruction how to remove the stretcher part from the base

- Remove the triangular protection plate by unscrewing the two screws in below photo.



- Then remove the screw and nut that holds the stainless steel wire on one side only!
- Then pull out the wire from the opposite side. Make sure that customer first checks how the wire is routed so that he later can route it back in the same way.

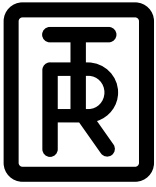
- You are now ready and you can lift off the stretcher part from the base.
- And when you have moved it to the 2nd floor, just mount it together again by reading this instruction in reversed order.



- Then remove the two screws and nuts that holds the top of the gassprings and fold the gassprings down.
- Then carefully remove the two center bolts and nuts that connects the stretcher to the base. (You can see one of them in this photo (4) and the other one is a little bit further into the center of the stretcher. Make sure that someone holds or that you have some kind of support for the stretcher when these bolts are removed! Otherwise the stretcher will fall to the floor !



TR EQUIPMENT



TR 2000/3000/9650

Shower trolleys and Mobile Bath Lift System

Hygiene Equipment
Designed for People

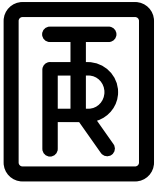
Rethreading the TR2000/3000 bed tilt cable



- Take the wire and put the black washer in the loop. Then put the wire loop and the washer inside the handle.
- Fix it on the handle with the screw, lock washer and nut.



TR EQUIPMENT



TR 2000/3000/9650

Shower trolleys and Mobile Bath Lift System

Hygiene Equipment
Designed for People



- Then pull the wire up and over the wire wheel on the stretcher and then also through the “bullseye” and to the second handle.

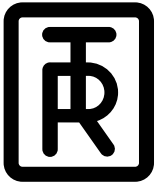


- Then pull the wire through the “bullseye” and over the wire wheel on the stretcher.
- Then put the wire down into the round hole in the sled. Inside the sled you have another wire wheel and you pull the wire under this wire wheel and up again and out through the round hole on the other side of the sled.

- Finally fix the wire loop to the second handle like you did in point 1 & 2.



TR EQUIPMENT



TR 2000/3000/9650

Shower trolleys and Mobile Bath Lift System

Hygiene Equipment
Designed for People

TR 3000, Instruction how to change the drivebelt (2007-)

Removing

- 1 Lower the stretcher to its lowest position by pressing the down button.
Remove the pillow and mattress and fold up the white plastic plate.
Remove the square lid on top of the sledge.
- 2 Release and remove the stop screw, inside the column, see picture.



- 3 Now remove the stretcher and sledge in three phases:
 - Two persons needs to lift the stretcher about 100 mm (4 inches) for a third person to put tape around the sledge to keep the top sliding washers and the shims in place, see picture. This makes it easier when assembling the trolley later on.



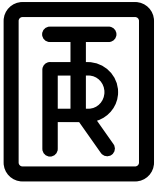
- Then lift the stretcher some more and remove the screw and stainless steel pin holding the drivebelt on the sledge, see picture. Then tape the lower plastic washers.



- 4 Lift the plastic cover a little bit (it's fastened by velcro) and disconnect the wires to the switches for up/down pedal. Notice where the wires were connected, since you need to connect them again later.
Lift off the plastic cover completely.
- 5 Lay the trolley on its side and remove the bottom steel cover on the chassi.
- 6 Notice and remember how the drivebelt runs. Remove the old drivebelt from the motor.



TR EQUIPMENT



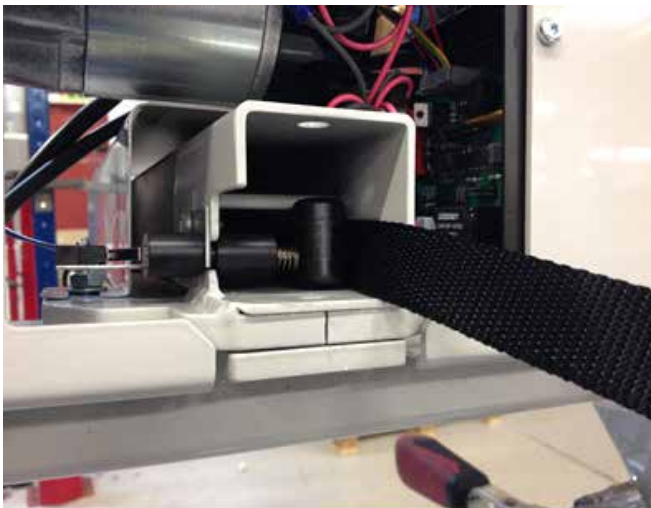
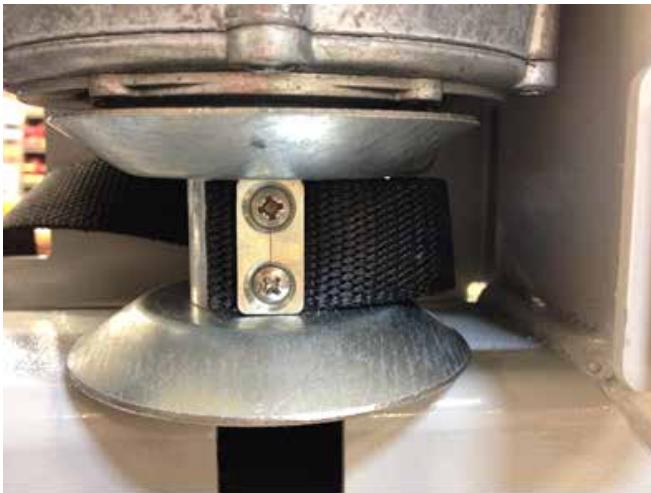
TR 2000/3000/9650

Shower trolleys and Mobile Bath Lift System

Hygiene Equipment
Designed for People

Assembling:

- 1 Push in the new drivebelt from the bottom of the column. Press on the belt slacking mechanism to let the drivebelt pass all the way to the top of the column. Mount the drivebelt on the motor and make sure the drivebelt is not twisted. Remount the bottom steel cover on the chassi.



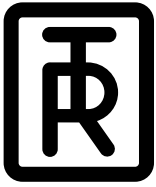
- 2 Connect the wires to the switches in the plastic cover and mount the plastic cover on the chassi again. Raise the trolley on its wheels.
- 3 Now two persons lift up the stretcher + sledge over the column. The third person mounts the drivebelt on the screw and stainless steel pin to the sledge (see photo under pos. 3b. above)
Make sure the belt is not twisted !
- 5 Very carefully push the sledge onto the column so that the sliding washers and shims don't fall out. Remove all the tape while slowly lowering the sledge on the column. Then push the sledge all the way down on the column.
- 6 Mount the stop screw inside the column again. Be careful not to drop it.



- 7 Mount the square lid on top of the sledge. Fold down the white plastic shelf and put the mattress and pillow back.
- 8 Make a final test. First by pressing the up button to reach the stretcher top position and then the down button.



TR EQUIPMENT



TR 2000/3000/9650

Shower trolleys and Mobile Bath Lift System

*Hygiene Equipment
Designed for People*

TR 9650, Installing the spacer kit

The locking casters can be identified by the light gray pedal



The straight steer caster can be identified by the dark gray pedal and the two locating pin holes in the top.

The locking caster spacer can be identified by black thin rubber washer.



The straight steer caster spacer can be identified by the two locating pins in the top.



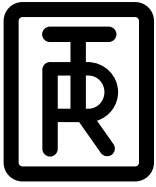
Closeup of the locating pins.



Assembly of the stright steer spacer to the straight steer caster:
The bolt is 16 mm and runs up through the caster and into the base of the TR 9650.



TR EQUIPMENT



TR 2000/3000/9650

Shower trolleys and Mobile Bath Lift System

*Hygiene Equipment
Designed for People*



Lay TR 9650 on it's back (column on the ground). Straight steer casters are located on the top/T section of the base. Unbolt (16 mm) caster and remove from lift.



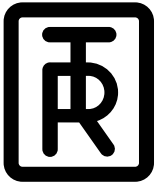
A thin metal D-shaped plate should be removed from the caster. Gently pry off.



D-Bracket end of the spacer should fit inside the base. Reassemble bolting the caster through the spacer to the base of the TR 9650. Make sure the locating pins on the spacer are aligned with the locating holes on the caster. Coat the threads on the end of the screw with the red Loctite supplied and tighten the bolt into the base.



TR EQUIPMENT



TR 2000/3000/9650

Shower trolleys and Mobile Bath Lift System

Hygiene Equipment
Designed for People



Incorrect installation!

The spacers have a right & left orientation to the "D" end. If installed incorrectly, the casters will lock in a position that will not allow for straight steering. This will be quite obvious.



Correct installation!

The spacers, if installed correctly, will be parallel to the ground allowing for straight steering



TR EQUIPMENT



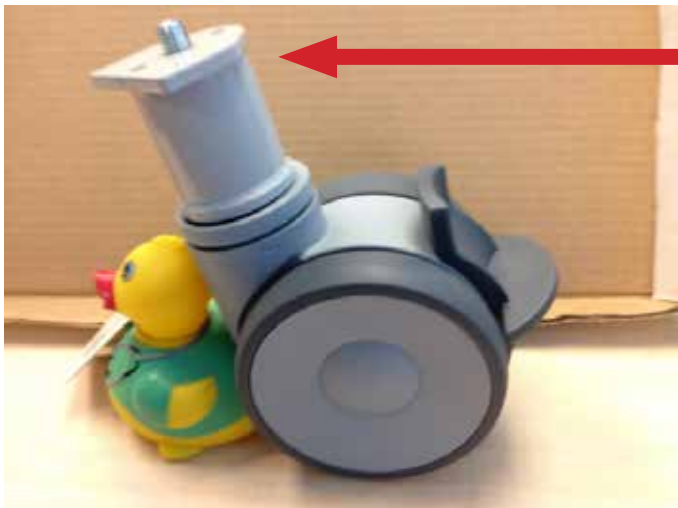
TR 2000/3000/9650

Shower trolleys and Mobile Bath Lift System

*Hygiene Equipment
Designed for People*



Locking caster spacer assembly is similar to the straight steering. The thin black rubber spacer goes in between the caster and the spacer.



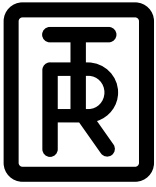
Proper assembly with the D end of the spacer on top.



Prior to use, make sure all casters work properly. Check the both straight steering and locking casters to assure they are functioning properly. Stability of the lift will not be affected by the installation of the spacer kit so the installation should be only noticeable by appearance and not by function.



TR EQUIPMENT



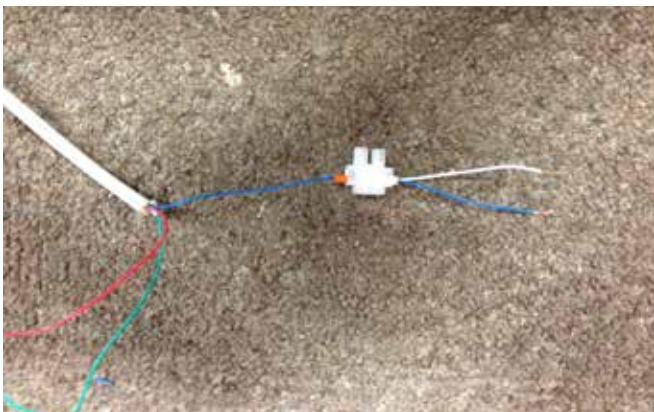
TR 2000/3000/9650

Shower trolleys and Mobile Bath Lift System

Hygiene Equipment
Designed for People

Adapting the TR9650 with a hand control

1. To adapt the TR 9650 with a handcontrol you need that have:
 - Hand control for TR 1700, item number 819184
 - Linak female connector, item number 819097
2. Remove the plastic cover and drill a 15 mm hole in the chassis next to the charging outlet and mount the connector. Be sure to add silicon to back side of the connector to seal it properly
3. For the TR 9650 to work with the hand control there needs to be 2 COM (one for each foot switch) and therefore the blue cable need to be split in two.
Cut two equally long pieces of wire , one white and one blue, and connect these to the remaining blue wire on the hand control cable (see Pic .1 below)



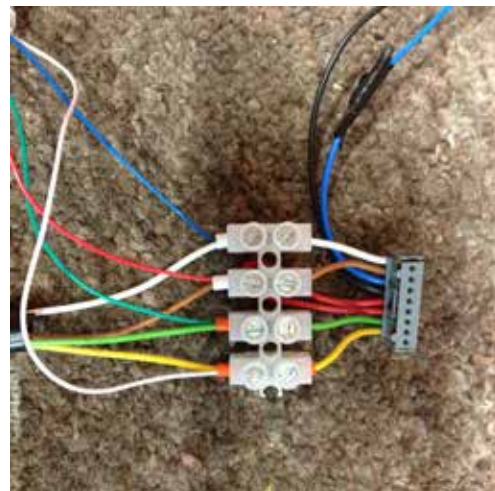
4. For the work to be a Little bit simplr from now please cut the reaming brown, orange and white wire from the hand control cable as they are not need

5. Take a terminal block and connect the wires as follow:
Mount the white wire from the "hand control cable " together with the yellow wire on the "footswitch cable" and connect to the yellow wire form the microswith cable.

Mount the green wire from the "hand control cable " together with the green wire on the "fotswitch cable" and connect to the green wire form the microswith cable

Mount the blue wire from the "hand control cable " together with the white wire on the "fotswitch cable" and connect to the white wire form the microswith cable.

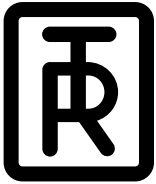
Mount the red wire from the "hand control cable " together with the brown wire on the "fotswitch cable" and connect to the brown wire form the microswith cable (See pic. 2).



6. All cable are now connected and ready to use



TR EQUIPMENT



TR 2000/3000/9650

Shower trolleys and Mobile Bath Lift System

Hygiene Equipment
Designed for People

Changing the tilt gas springs.

Remove mattress from the shower trolley.

Flip up the hinged white stretcher board.

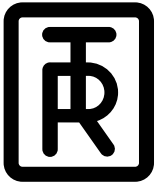
Remove the triangular plate by unscrewing the two screws shown in below photo.



Loosen the wire in one (either) stretcher short end. Do **not** remove the wire.



TR EQUIPMENT



TR 2000/3000/9650

Shower trolleys and Mobile Bath Lift System

Hygiene Equipment
Designed for People

Changing the tilt gas springs.

Loosen the top bolt for the gas spring and release the gas spring so it folds down.



Check the gas spring visually. The most common problem with the gas spring is the metal pin shown in photo below, see red arrow.

This metal pin is either:

- Stuck in the bottom position
- Metal pin is bent
- Metal pin has been broken off

All three of these problems are visual and you immediately see which gas spring is broken.

If you cannot see anything wrong with the metal pin then the gas spring is broken internally. Then the only way to figure out which gas spring is broken is to replace one at a time. Reattach the wire and test tilt function.

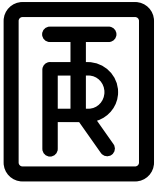
To remove the broken gas spring loosen the black nut and unscrew the gas spring see photo below.



Screw the new gas spring in place and tighten the black nut to lock it in place. Attach the gas spring with the top bolt. If both gas springs need to be replaced just repeat the above steps. When gas springs are replaced reattach the wire and the triangular plate.



TR EQUIPMENT



TR 2000/3000/9650

Shower trolleys and Mobile Bath Lift System

Hygiene Equipment
Designed for People

Instruction Retrofit TR 9650/TR 3000 with magnetic charger connection



TR 9651/TR 9651-S



TR 3000



New metal plate for TR 9650/TR 9651-S



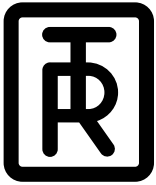
New metal plate for TR 3000



Remove the bolt on the column (Allen Key 5 mm) (TR 9650)



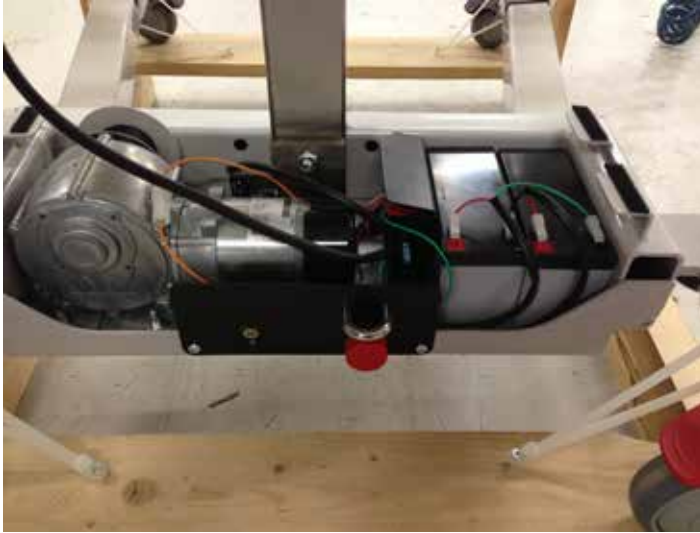
TR EQUIPMENT



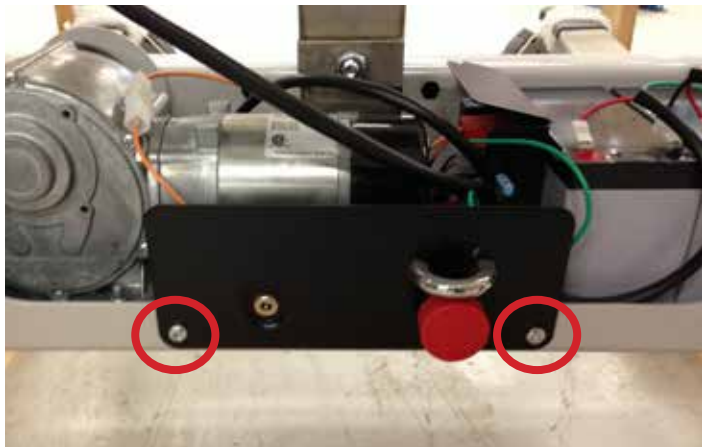
TR 2000/3000/9650

Shower trolleys and Mobile Bath Lift System

Hygiene Equipment
Designed for People



Lift the chassis cover

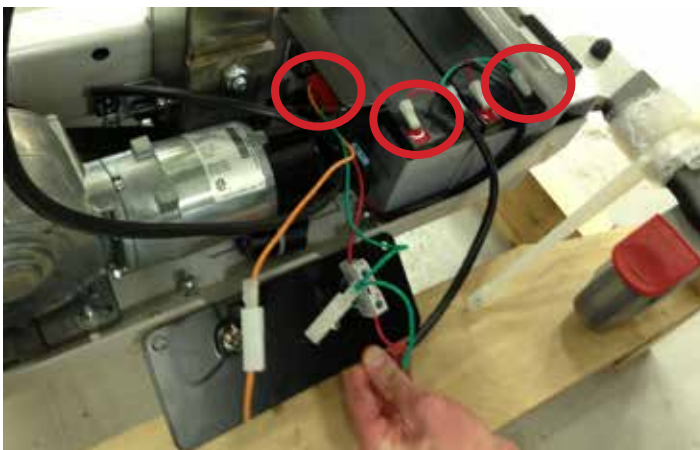


Loosen the bolts (Torx 25) to remove the metal plate

Use the new metal plate and attach the connector to the circuit board and the two connections to the batteries. Make sure that - (negative) on the charging connection is connected to - (negative) on the battery.



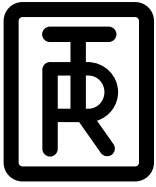
Attach the metal plate to the chassis with the two bolts. Make sure that the cables are not kinked. Lower the chassis cover and fasten the screw on the column.



Remove the cable from the circuit board and the two outer connections on the battery.



TR EQUIPMENT



TR 2000/3000/9650

Shower trolleys and Mobile Bath Lift System

Hygiene Equipment
Designed for People

Instruction how to replace the cover on a TR 9650

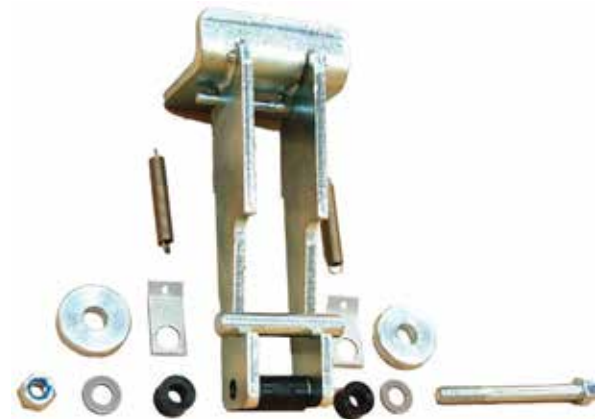
1. Unscrew and remove the knob or the locking nut depending on the age of the lift and remove the chair from the lift.



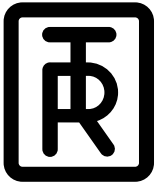
2. Unscrew and remove the stop screw in the bottom part of the column and then raise the sled to the middle of the column by pressing ^ on the foot control. Then lift the sled manually a little bit more so that you get a slack on the lift band.



3. Unscrew the nut and remove the screw that holds the auto stop mechanism. Be careful and take care of all the parts that will fall out! See right photo. Then knock out the auto stop with a plastic hammer.



TR EQUIPMENT



TR 2000/3000/9650

Shower trolleys and Mobile Bath Lift System

Hygiene Equipment
Designed for People

4. Unscrew and remove the stop screw in the top of the column and unscrew and remove the two screws that hold the black lid.



5. Unscrew and remove the screw, sleeve and the lift band roller.



6. Put adhesive tape around the sled over all 8 pcs. of sliding washers, so that they won't fall out of the sled when you remove the sled from the column. Then carefully lift off the sled straight up from the column so that the sliding washers don't fall out. Also make sure that the lift band does **not** fall down into the column.



TR EQUIPMENT



TR 2000/3000/9650

Shower trolleys and Mobile Bath Lift System

*Hygiene Equipment
Designed for People*

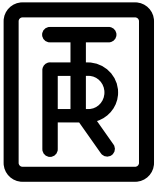
7. Pull up the grey plastic cover and carefully remove the connectors that are connected to the foot control underneath the cover. (Make sure that you remember how the wires were connected so that you connect them correctly in the same way on the new cover.) Brown/White wire on one side and Green/Yellow on the other.
Then completely remove the damaged cover from the column and replace it with the new one.



8. Then follow point 1-7 in reverse order to restore the lift to its original appearance.
9. Please see separate instruction for assembling the auto stop mechanism.



TR EQUIPMENT

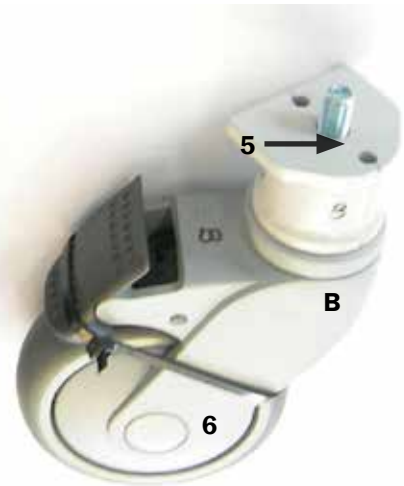
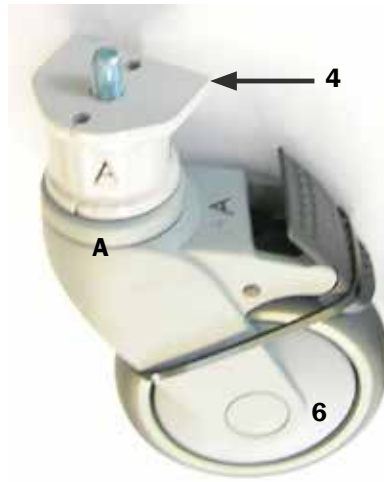


TR 2000/3000/9650

Shower trolleys and Mobile Bath Lift System

Hygiene Equipment
Designed for People

Assembly Instructions - Raised chassis set



Important: Make sure to attach the wheels in the right position and tighten the screws properly using Loctite.

Articles included in the set, 0522030

| No | Art no | Number needed |
|----|-------------|---------------|
| 1 | 831051-2025 | 2 |
| 2 | 3430462 | 2 |
| 3 | 850510 | 2 |
| 4 | 3430063 | 1 |
| 5 | 3430063-02 | 1 |
| 6 | 850516 | 2 |



TR EQUIPMENT

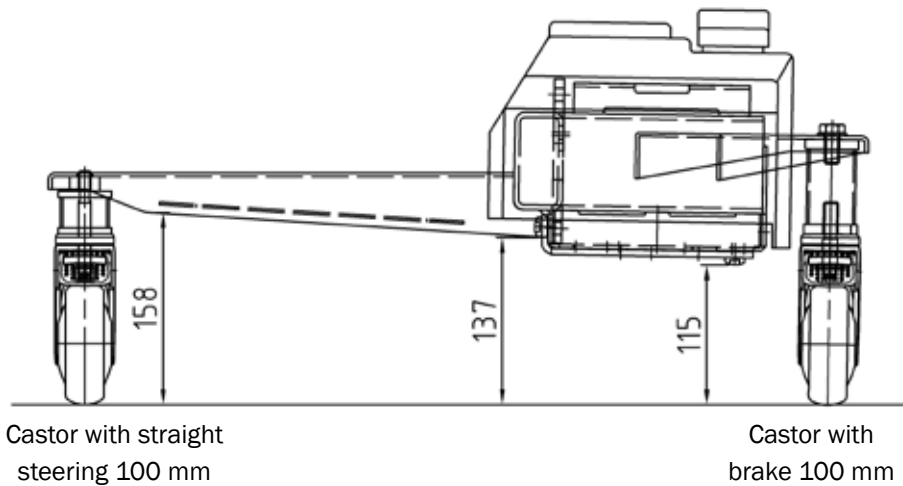


TR 2000/3000/9650

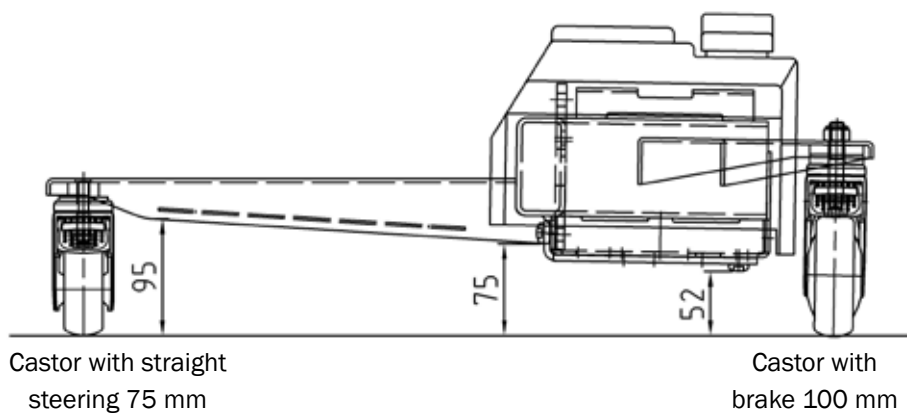
Shower trolleys and Mobile Bath Lift System

Hygiene Equipment
Designed for People

Trolley with raised chassis set, 0522030



Trolley with standard chassis



TR EQUIPMENT